



Serving South Utah Valley since 1990  
More than just waste management

# Overview

- ▶ SUVSWD Beginnings
- ▶ Solid Waste Management Evolution
- ▶ SUVSWD adaptation/new operations
  - Compost
  - Recycling
  - Electronics
  - Household Hazardous Waste
  - Green Energy
- ▶ The Big Picture



# SUVSWD Beginnings

- ▶ The district was established May 11, 1989 under the provisions of the Utah Special Service District Act.
- ▶ The district's purpose is to provide proper management of municipal solid waste (MSW)
- ▶ MSW: trash or garbage—consists of everyday waste, such as product packaging, grass clippings, furniture, clothing, bottles, food scraps, newspapers, appliances, paint, and batteries. This comes from our homes, schools, hospitals, and businesses.



# Waste management 20 years ago



# Beginning SUVSWD Operations

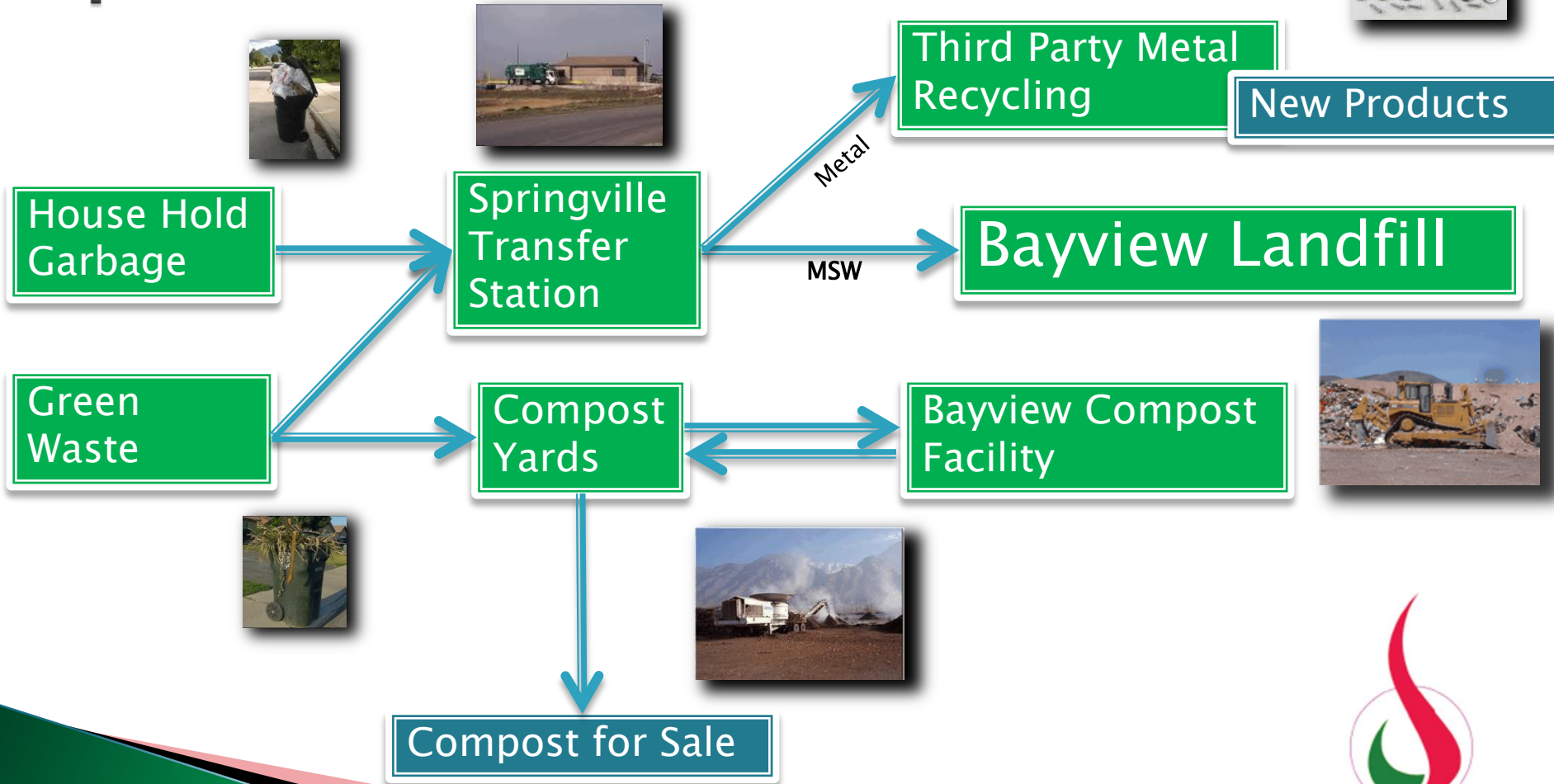


# Solid Waste Management Evolution

- ▶ Solid waste management has changed for the best interest of:
  - Public health
  - Conservation
  - Economics
  - Engineering
  - Aesthetics
  - Public attitudes
- ▶ SUVSWD has changed too



# SUVSWD 2000's Operations



# Green waste recovery program “Composting”



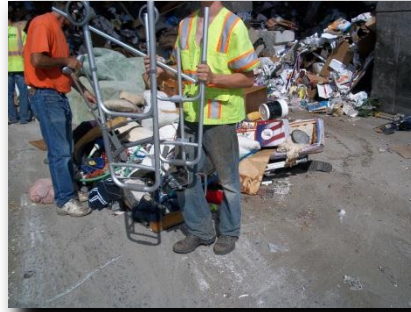
Green waste is collected or dropped off at compost facility



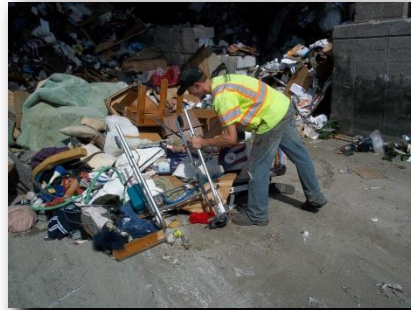
Green waste is turned into compost for retail



# Metal Recycling program



**Third party  
metal  
recycler**

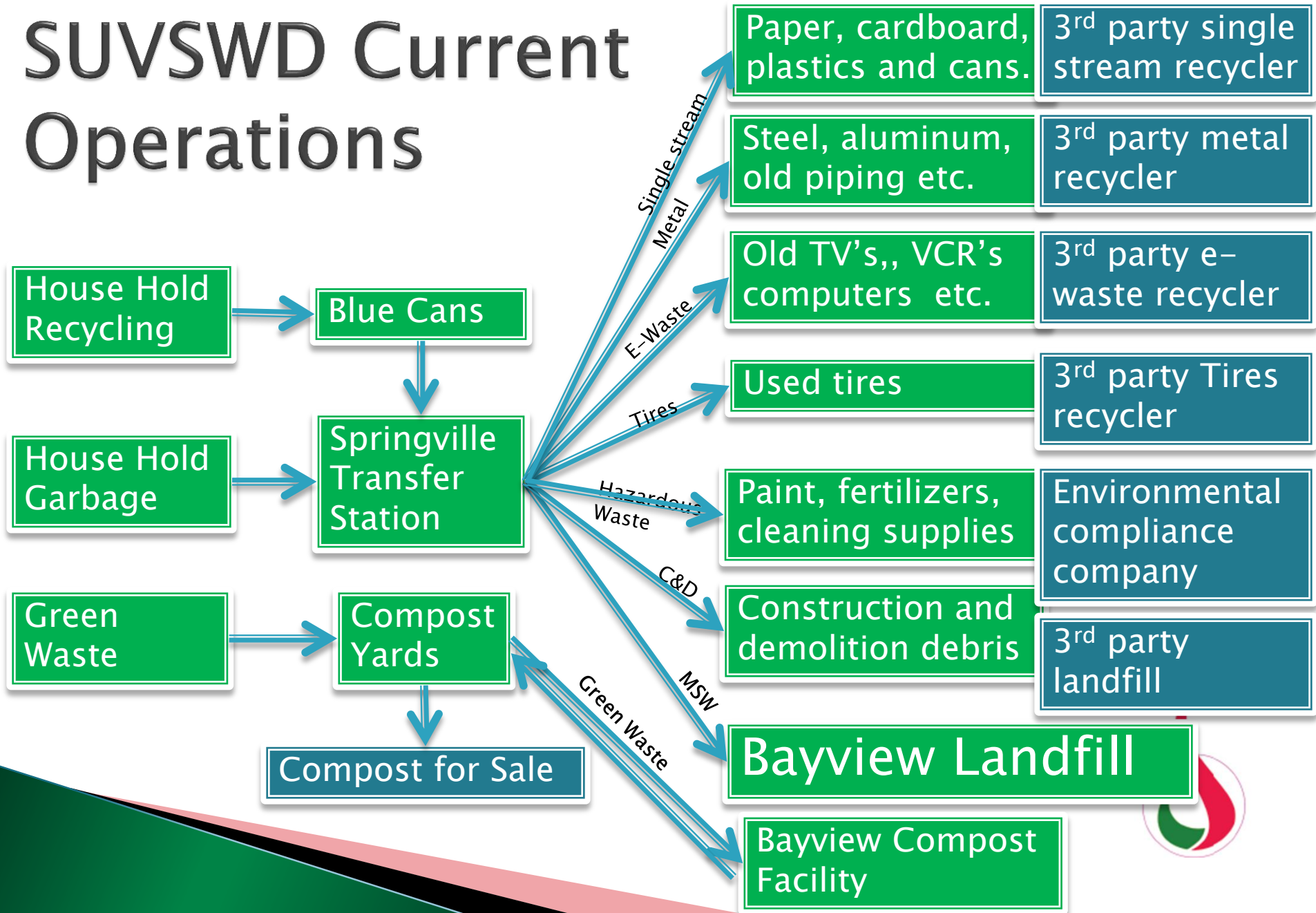


Metal is hand collected  
and recycled via third  
party.



Metal arrives mixed in  
with garbage,

# SUVSWD Current Operations



# SUVSWD adaptation/new operations

- ▶ Over the last years SUVSWD has incorporated the following initiatives:
  - Green Waste Recovery
    - Composting with different retail finish products
  - Recycling
    - Single stream (Paper, cardboard, plastic and cans)
    - Metals
    - Tires
    - Electronics
  - Environmental Compliance Disposal
    - Household hazardous waste
    - Construction and demolition debris



# Single Stream Recycling



Curbside recycling (Provo), or drop off at recycling containers



Recycling is transported to 3<sup>rd</sup> party recycler



# Electronics Recycling



E-waste is consolidated in transfer station, then sent to 3<sup>rd</sup> party e-waste recycler. Equipment with Freon is treated at transfer station by a certified technician



# Used Tires recycling



Tires are consolidated at transfer station, then picked up by a compliant environmental firm to be recycled



# Household Hazardous Waste Environmental Compliance Disposal



Household hazardous waste is consolidated at transfer station



Household hazardous waste is sent to 3<sup>rd</sup> party environmental compliance firm to be properly disposed.



# Construction and Demolition Debris Environmental Compliance Disposal



C&D is consolidated at transfer station and then transported to 3<sup>rd</sup> party company for proper disposal





# SUVSWD adaptation

- ▶ MSW management
  - ▶ Green waste recovery (compost)
  - ▶ Metal recycling
  - ▶ Single stream recycling
  - ▶ E-waste recycling
  - ▶ Tires recycling
  - ▶ Household hazardous Waste
  - ▶ Construction and demolition debris

SUVSWD 1989

SUVSWD Today

# The Big Picture

- ▶ SUVSWD has adapted to be in compliance with every requirement stated by the law. Further SUVSWD has developed initiatives that are not required by law in order to provide the most environmentally–friendly service. SUVSWD takes its stewardship with the environment seriously and will continue to offer environmentally conscious and quality services to South Utah Valley.



# For more information

- ▶ Visit our website at:

[www.suvswd.org](http://www.suvswd.org)

