

WHERE
DOES MY
TRASH GO,
anyway?



What is my milk jug's
* **ULTIMATE** *
* **DESTINY?** *

Can I
recycle
this?

How
'bout
this?



EASY WAYS
— TO —
MAKE
— A —
DIFFERENCE

TRASH TALK

COLORING + ACTIVITY BOOK

JOKES, BRAIN TEASERS,
GAMES AND MORE!

≡ every page can be colored ≡

FUN!
funny &
FULL OF
facts

What is the #1 cause of
GARBAGE TRUCK FIRES
right here in Utah?

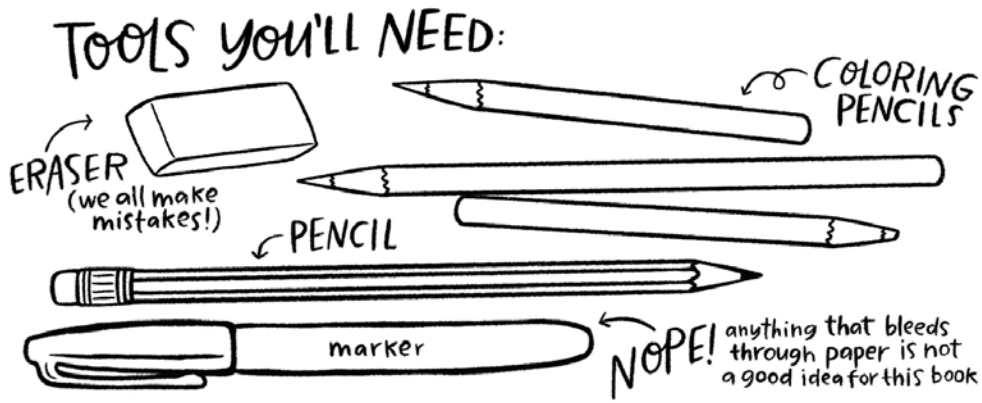


How does our
landfill turn
TRASH into
TREASURE?

NEXA

NEXT GENERATION WASTE SOLUTIONS

**YOUR VERY
FAVORITE**



We're **YOUR VERY FAVORITE**

We create clever coloring & activity books for all ages that are FUN, FUNNY & full of FACTS.
We hope that you have as much fun with this book as we had making it for YOU!

Copyright © 2025 Your Very Favorite

All rights reserved. No part of this book may be reproduced, stored in a retrieval system, transmitted, or used for training artificial intelligence models in any form or by any means—electronic, mechanical, photocopying, recording, or otherwise—without prior written permission from the publisher.

First Printing: 2025 • Printed in Spanish Fork, Utah, USA

Illustrated, written, and designed by Alma Loveland, Mike Loveland, and Holly Sparks | yourveryfavorite.com

This book was commissioned by Nexa, a division of the South Utah Valley Solid Waste District (SUVSWD).

Nexa is the next-generation waste solution, leading the way in innovative and efficient waste management practices for our community. With a focus on environmental stewardship, education, and state-of-the-art technology, Nexa is dedicated to creating a cleaner and more sustainable future for Utah Valley.

South Utah Valley Solid Waste District
DRY CREEK TRANSFER STATION
518 West 3450 North
Spanish Fork, Utah 84660
801-489-3027 • suvswd.org

N E X A
NEXT GENERATION WASTE SOLUTIONS

**YOUR VERY
FAVORITE**

HEY THERE, KID!
Have you ever wondered...



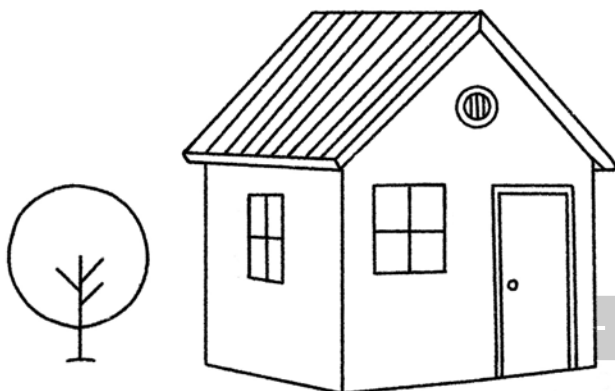
Let's find out what happens
to our trash and how everyone
—from waste workers to families like yours—
can help keep Utah safe and clean.

WHERE DOES MY TRASH GO?



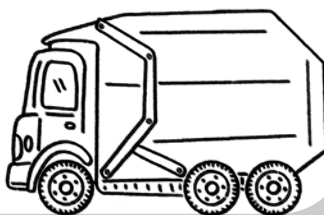
1 WASTE BINS

GARBAGE and RECYCLING are collected from the bins at your home by a contracted waste hauler.



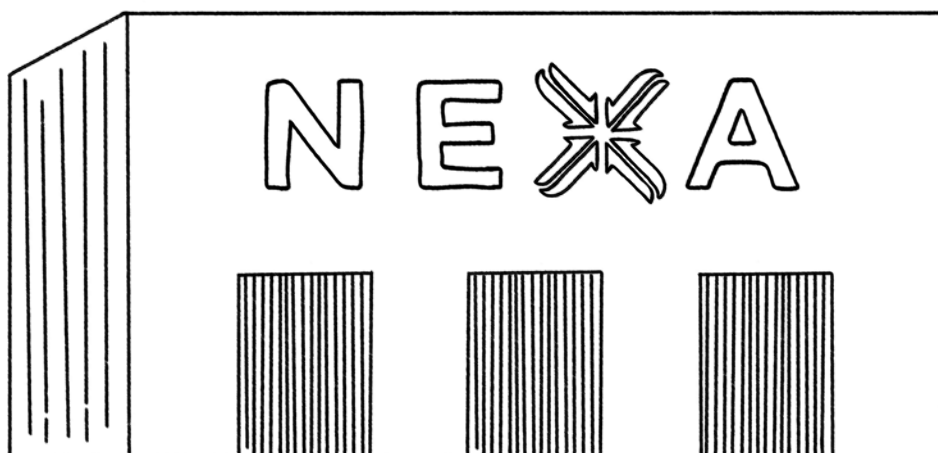
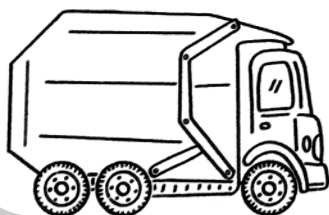
2 GARBAGE & RECYCLING TRUCKS

GARBAGE and RECYCLING trucks transport waste to the Dry Creek Transfer Station.



3 TRANSFER STATION

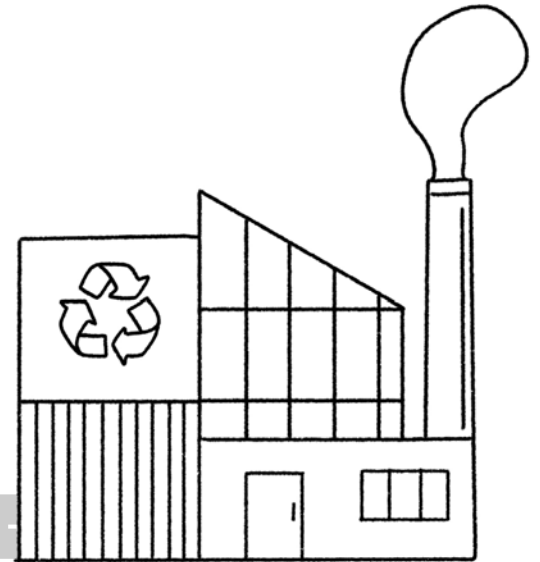
At the Transfer Station, GARBAGE and RECYCLABLES are pushed into their own compactors that form the waste or recyclables into a bale. The compacted bales are loaded into hauling trucks.





5 BAYVIEW LANDFILL

At the Bayview Landfill, the GARBAGE is unloaded, compacted, and buried.



6 RECYCLING CENTER

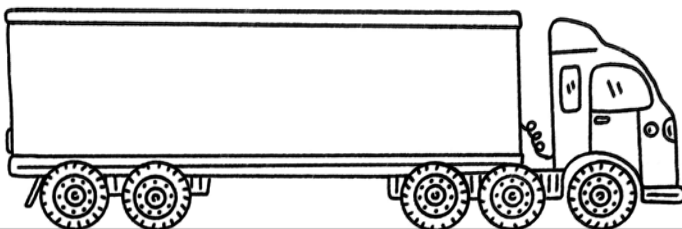
At the MRF, RECYCLABLES are sorted and then sold to manufacturers to be broken down and made into new products that can be sold and purchased in our community.



4 HAULING TRUCKS

Hauling trucks are filled with the compacted waste bales. GARBAGE is taken 33 miles away to the Bayview Landfill. RECYCLABLES are hauled to a Material Recovery Facility (MRF).

(rhymes with "turf") ↗

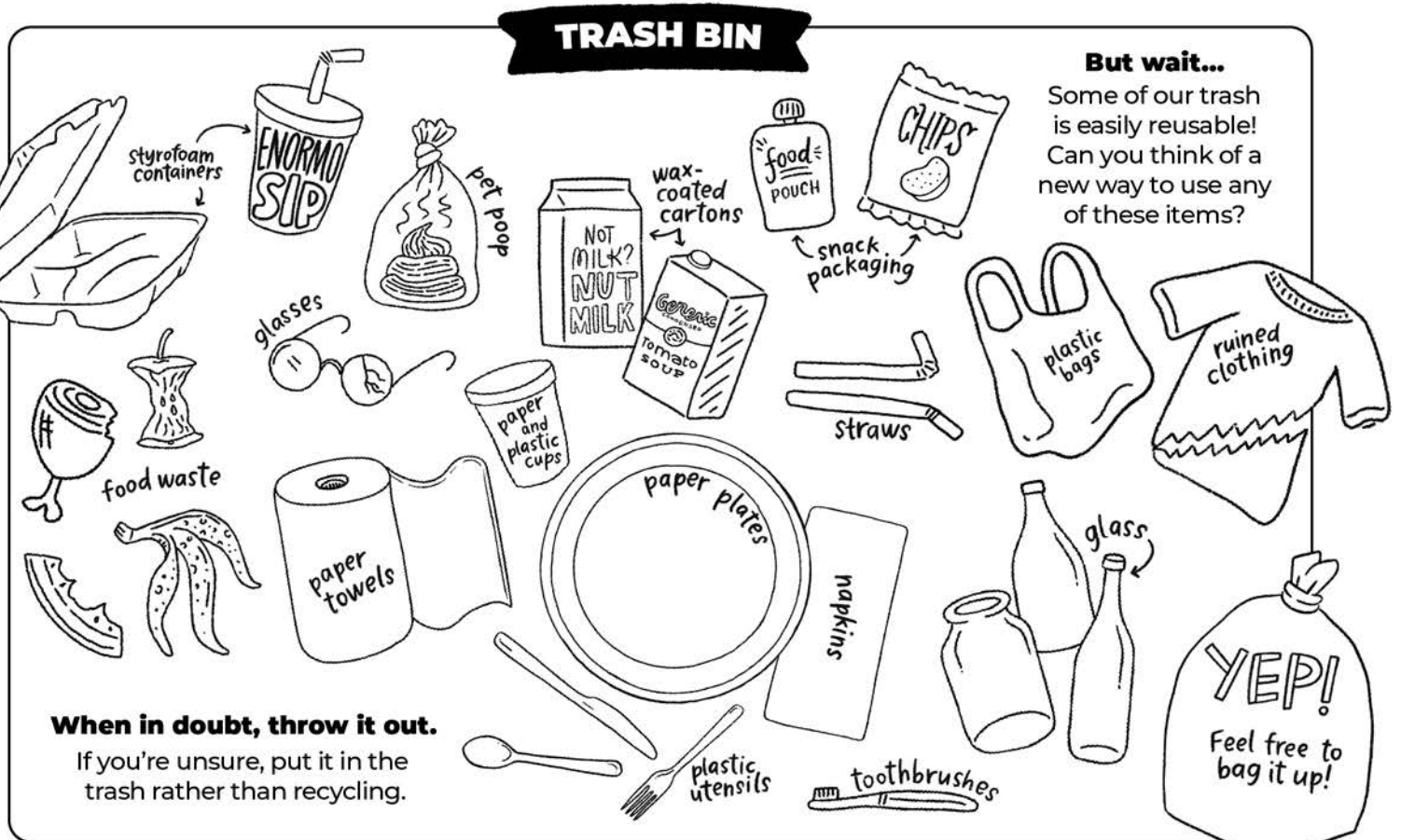


Whether you have something to throw away or questions about where your waste is going, Nexa can help you get rid of your trash and trust that you are doing it in a way that keeps Utah beautiful and clean.

We are the next-generation waste solution, here to serve our community!

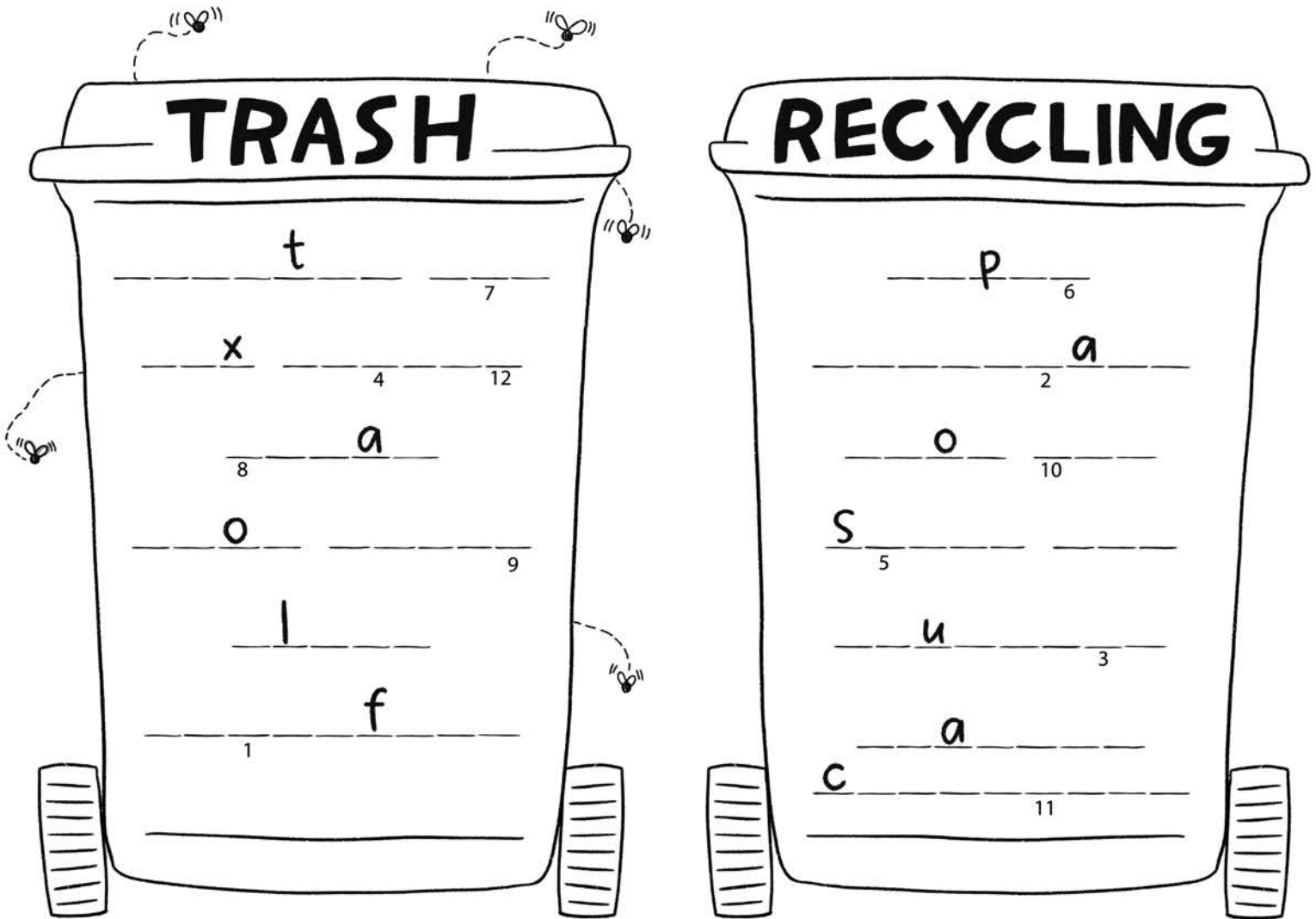
WHERE DO I PUT IT?

Sorting waste into the right bins is one of the easiest ways to make sure Utah's trash and recycling are handled the right way. Your efforts at home really make a difference in our community! Here are some common examples of what goes in which bin:



These items need to be sorted into the right bin. Fill in the blanks with the correct items, then use the numbers to solve the riddle below!

straw	paper	aluminum
cardboard	styrofoam	wax carton
plastic container	plastic bag	glass
food box	steel can	food pouch



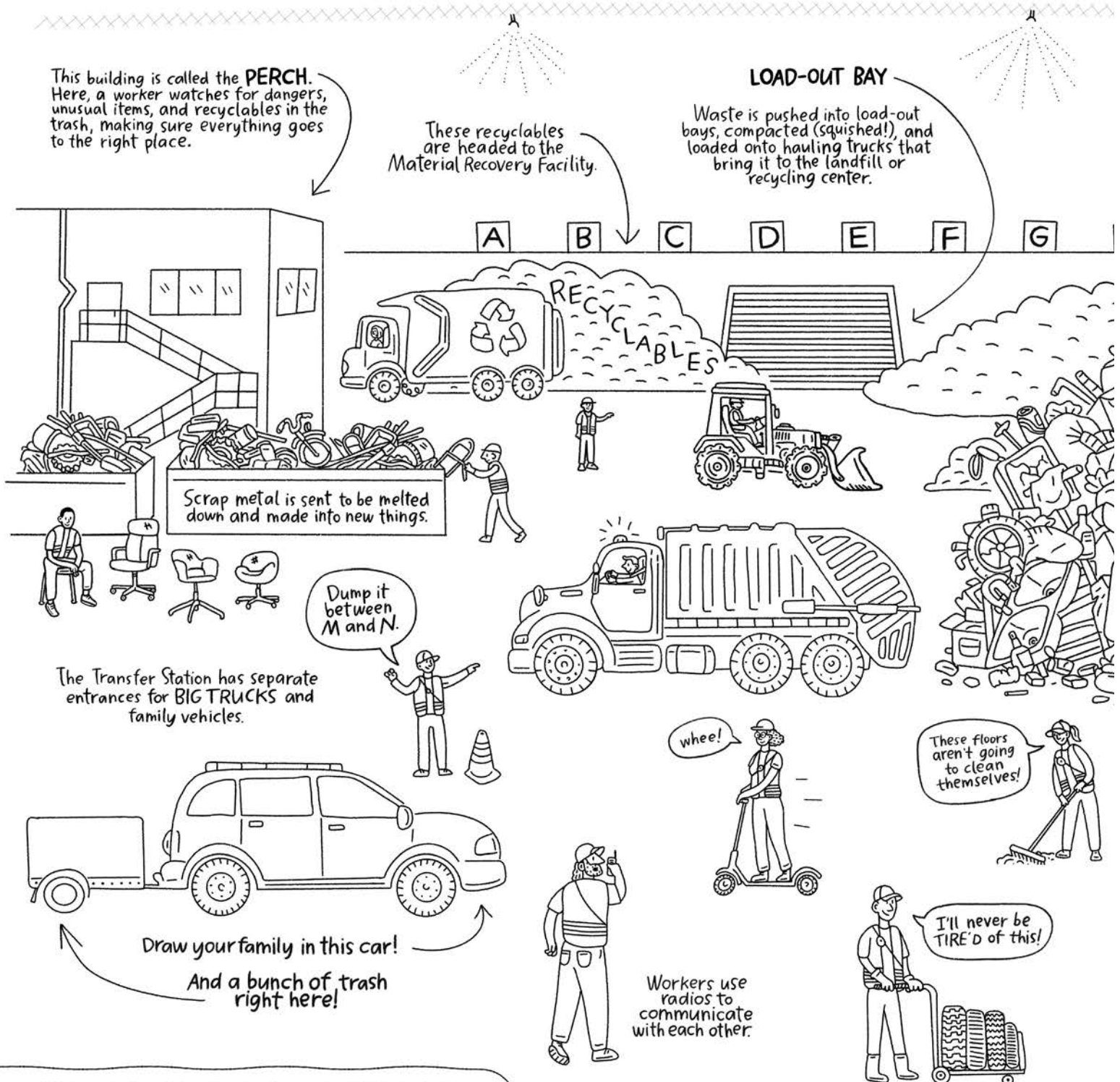
What has two wheels and flies?

1 2 3 4 5 6 7 8 9 10 11 12

When people put things in the recycling bin that don't belong, it can cause problems. **Not everything can be recycled!**
Let's keep recycling easy by only adding items that are accepted.

TRANSFER STATION

It's a busy day at the Transfer Station! This is where trash and recyclables from homes and businesses are gathered, sorted, and sent to the right destinations—whether that's the landfill, the recycling center, or another facility. The workers do their best to send reusable items to the right place, but it's up to all of us to make choices that help keep reusable materials out of the landfill.



HOW CAN YOUR FAMILY HELP?

- ✓ Sort your recyclables so they can be turned into new things instead of going to the landfill.
Look in the landfill pile. Can you find...
☐ 7 cardboard boxes ☐ 5 cans ☐ 3 milk jugs
- ✓ Donate or sell items that still work instead of throwing them away.
Can you find...
☐ a scooter's last ride to the scrap metal pile
☐ old chairs that are being enjoyed by a worker



Protective nets help keep birds safely outside.

The Transfer Station handles
600 To 1,000
tons of trash every day!

Water canons are ready to put out fires!
Can you find a fire in the trash?
Quick! Draw a stream of water to put it out!



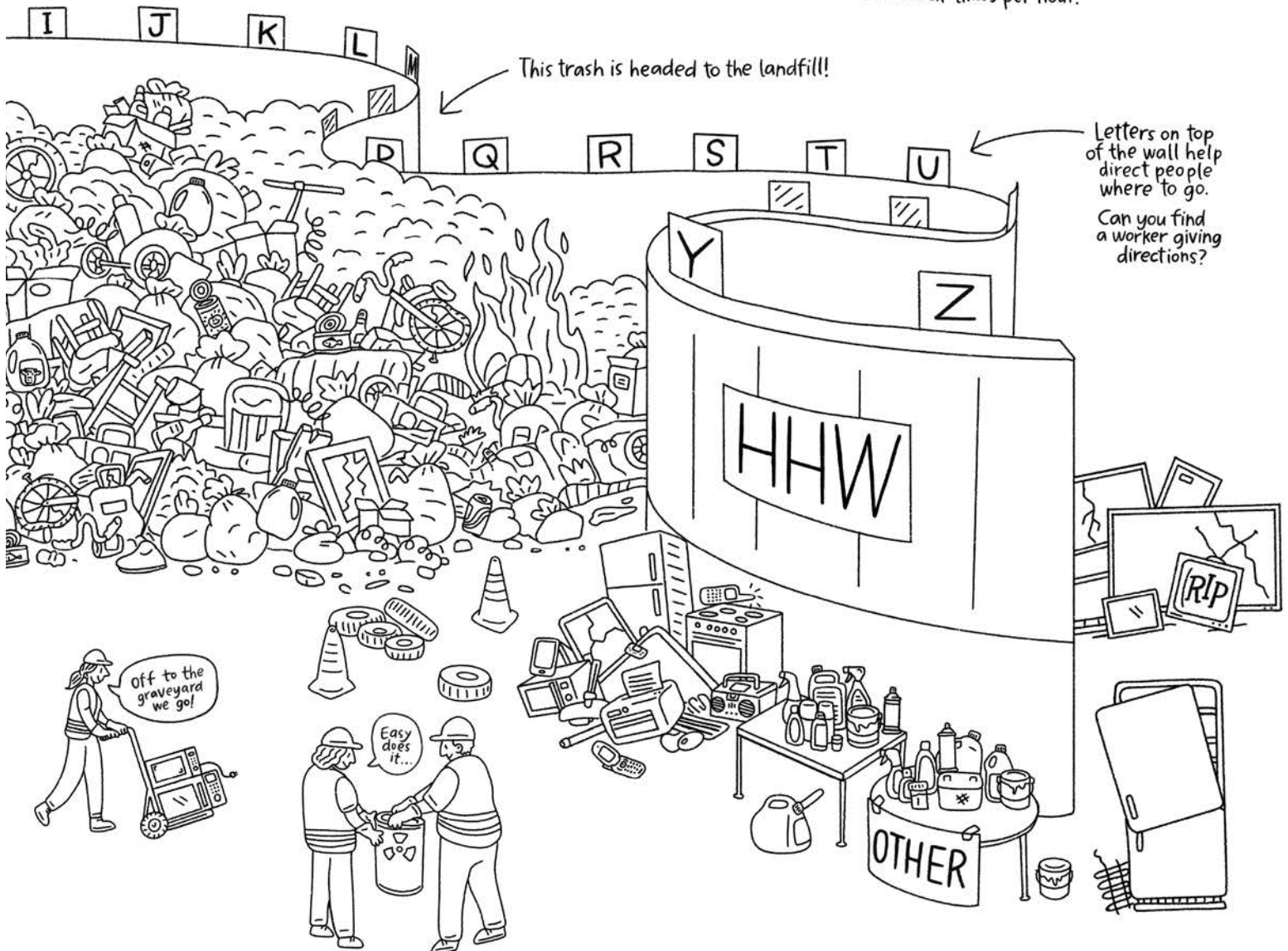
Whatcha doin', mister?

Misters spray water and odor neutralizer, and the ventilator system changes the air several times per hour.

This trash is headed to the landfill!

Letters on top of the wall help direct people where to go.

Can you find a worker giving directions?



✓ Drop off broken electronics or appliances so they can be taken apart safely.

Can you find...

☐ a TV graveyard ☐ 3 old cell phones

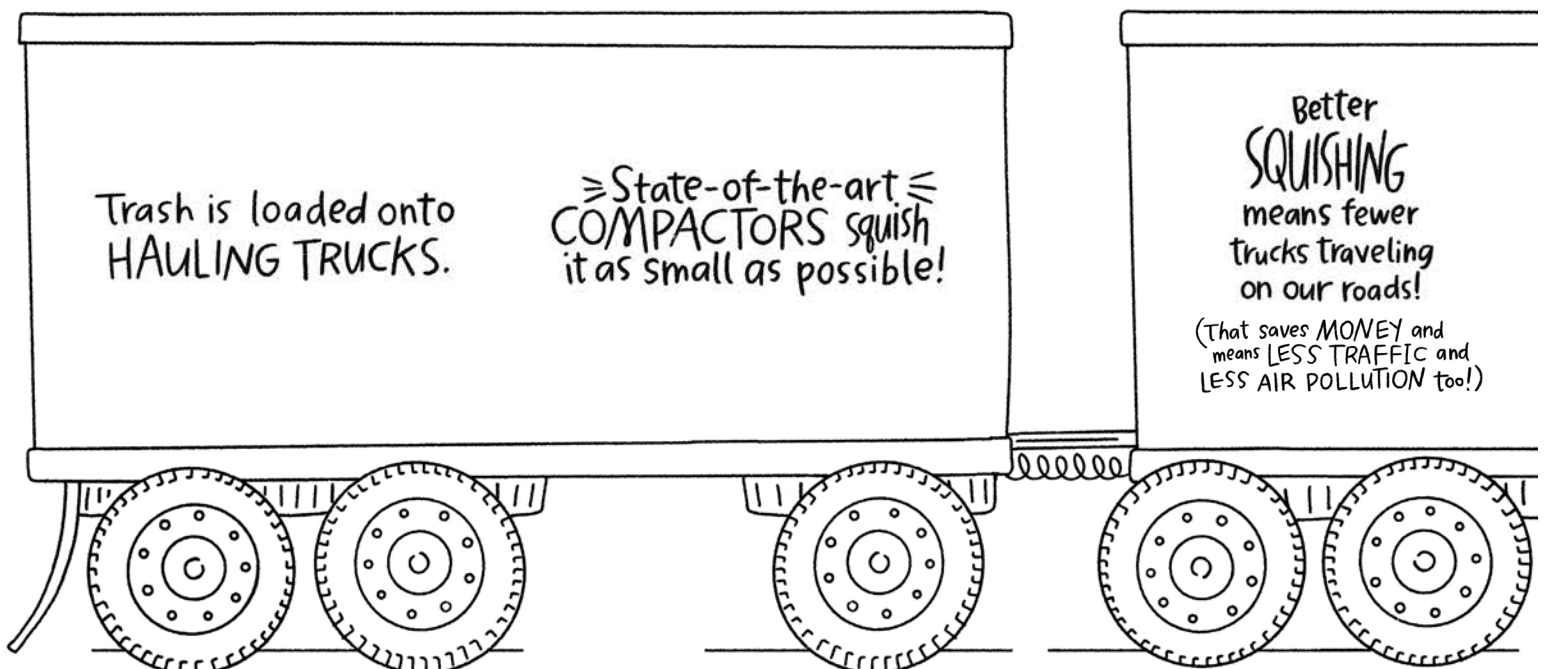
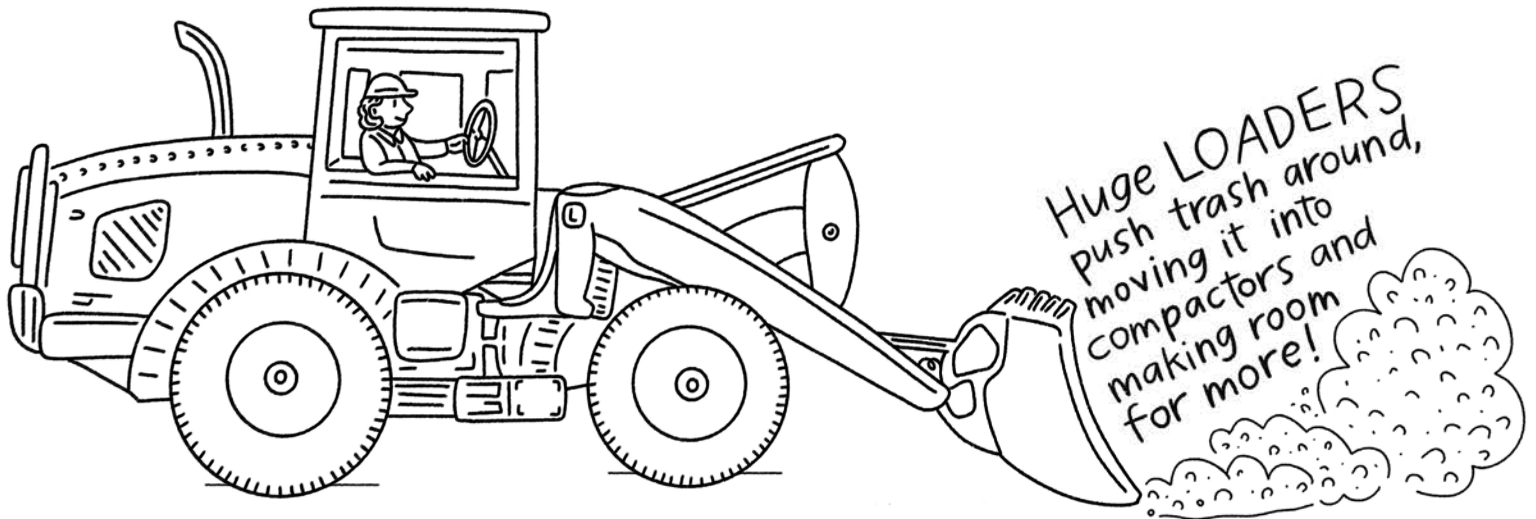
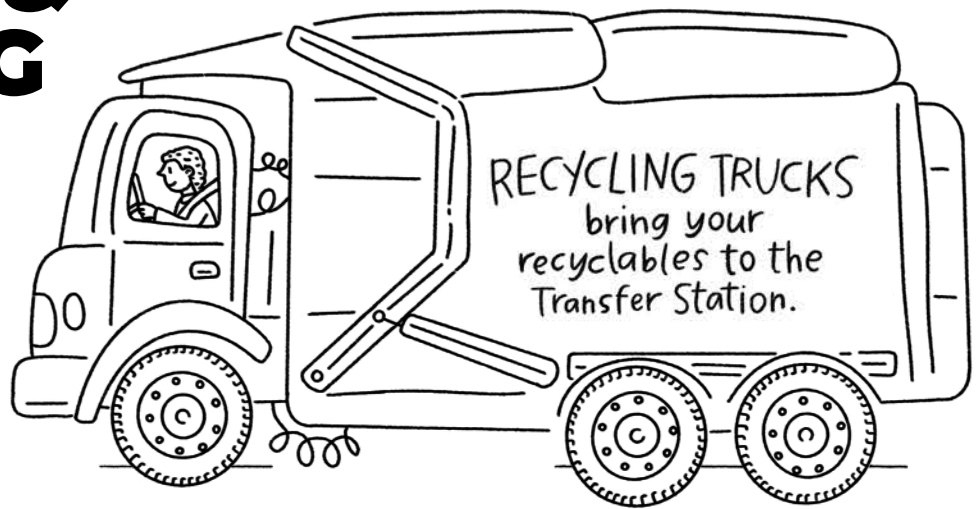
✓ Bring in hazardous waste (like paint, fuels, or batteries) so it can be handled safely.

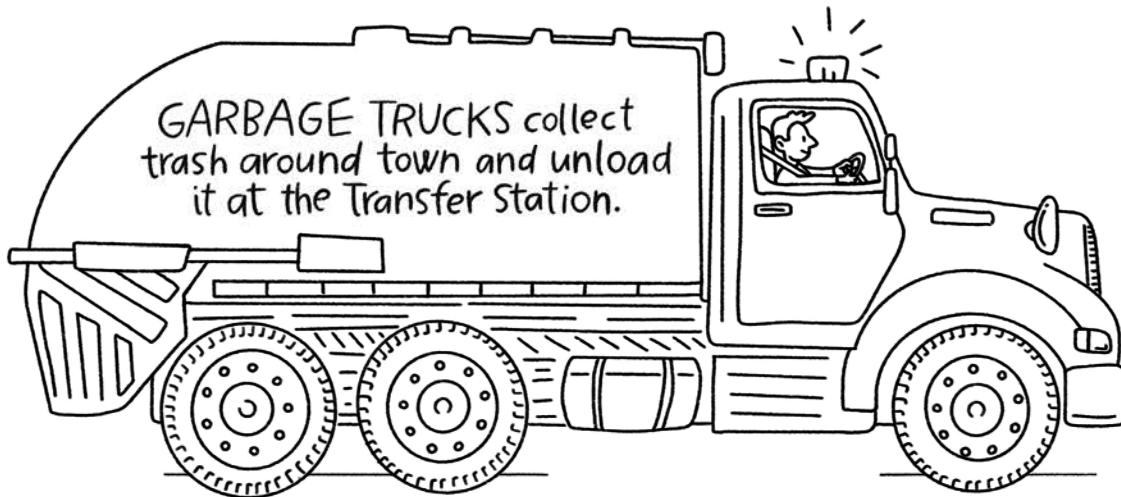
Can you find...

☐ 2 old aerosol (spray) cans
☐ 3 old paint cans

GARBAGE & RECYCLING VEHICLES

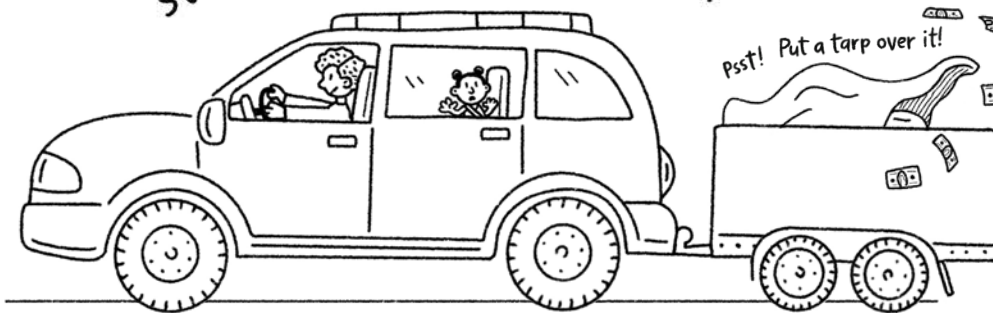
The Transfer Station handles lots of traffic—sometimes 600 to 800 cars and trucks a day! From garbage and recycling trucks to family cars and business vehicles, each one helps keep our community clean and organized.





GARBAGE TRUCKS collect trash around town and unload it at the Transfer Station.

FAMILIES LIKE YOURS can bring their trash to the Transfer Station—like after a big clean up at home!



A TINY TRUCK drives all day within a mile of the Transfer Station, cleaning up garbage that falls off vehicles bringing trash.



HAULING TRUCKS bring trash to the landfill and recyclables to the MRF.

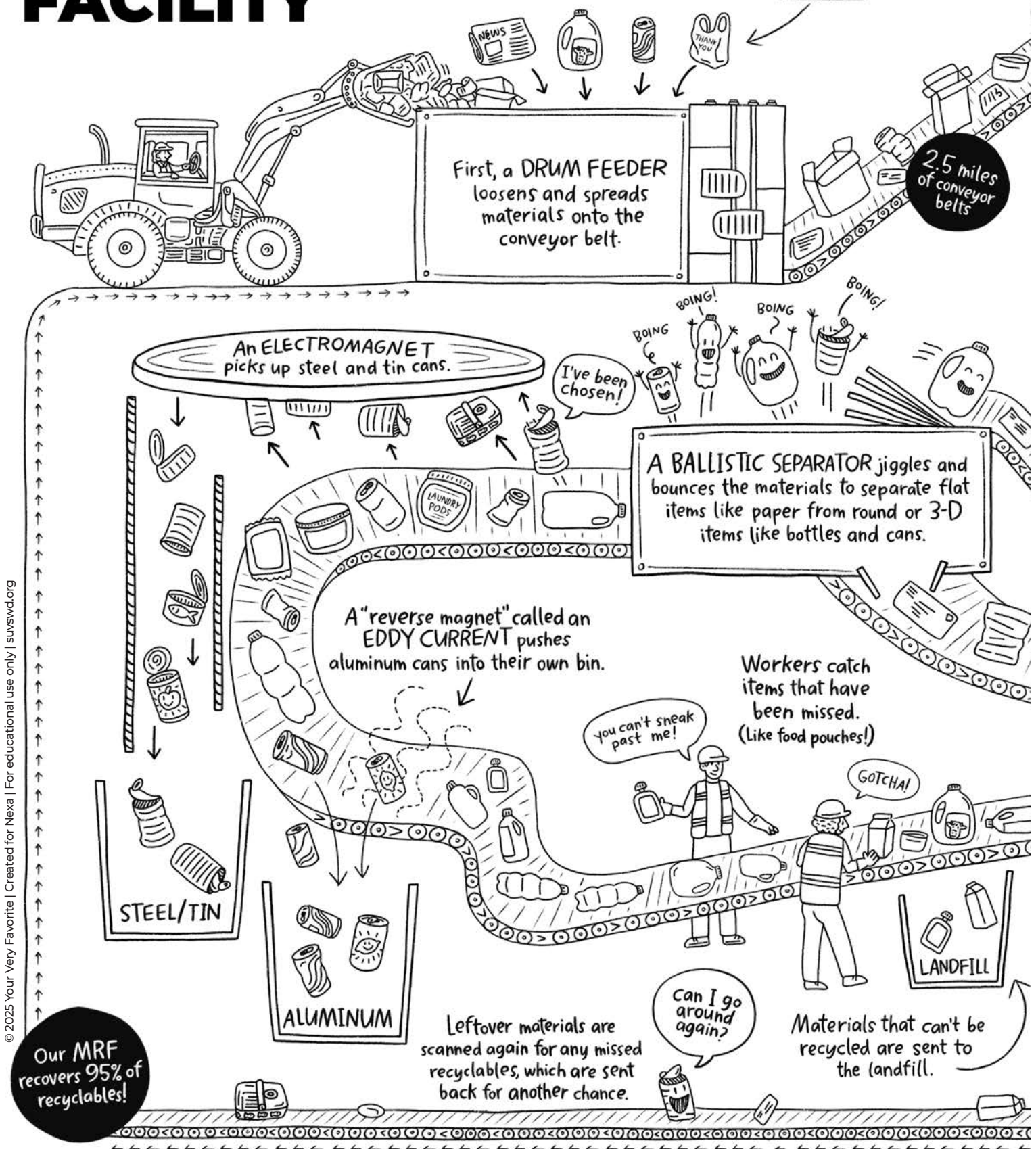
30-40 TONS in each trailer



MATERIAL RECOVERY FACILITY

Our recyclables are sent to a place in Salt Lake City called the Material Recovery Facility, or **MRF** for short (it rhymes with turf!). At the MRF, recyclables pass through big machines that sort them by type and prepare them for sale. Businesses buy these materials to create products you see and use every day.

Follow the conveyor belts to see where these items end up.





Workers remove big items that don't belong or that could damage machines.

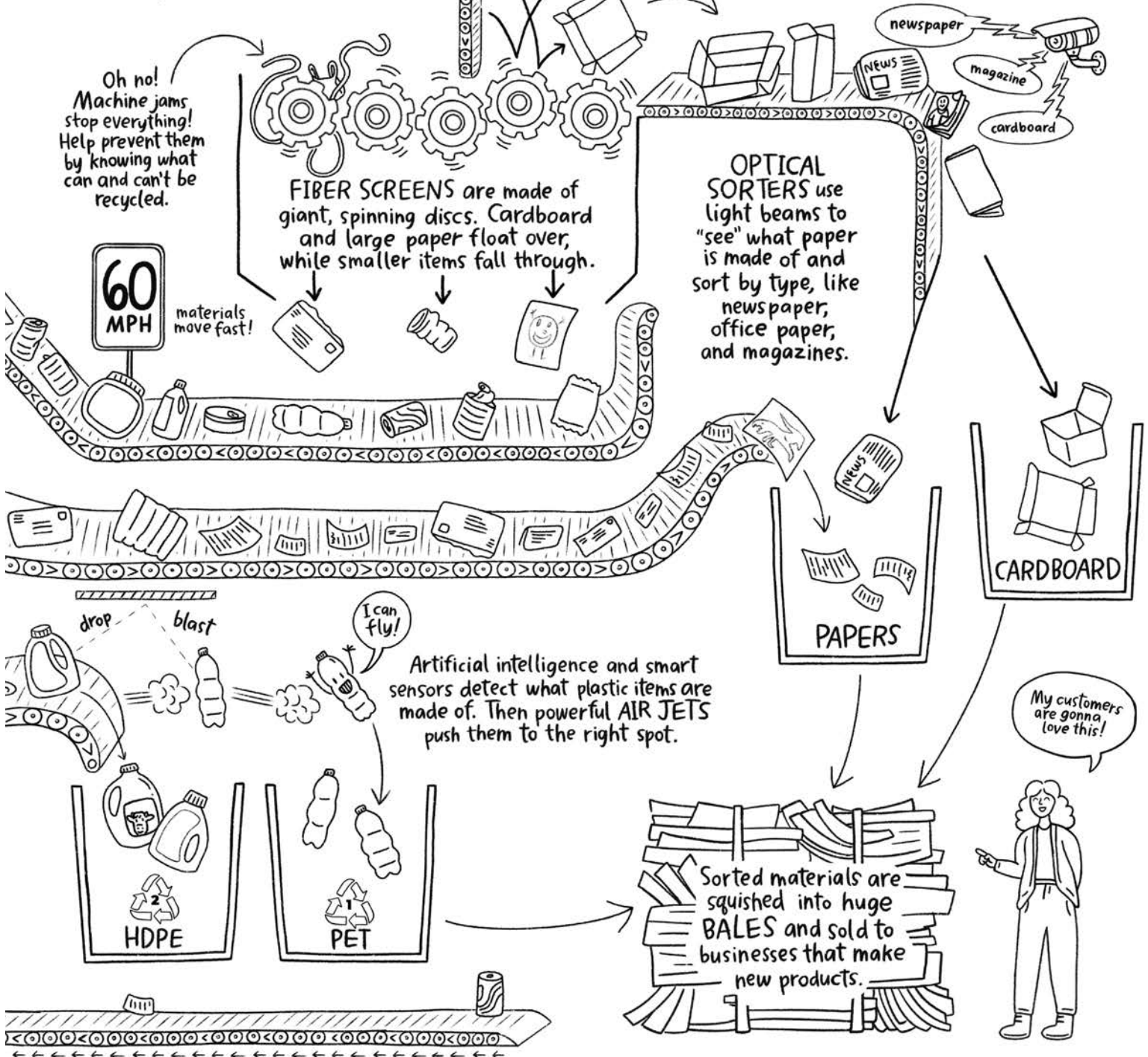
HELP STOP CONTAMINATION

Sometimes, people try to recycle things that are not accepted. Not everything can be recycled, even if we wish it could be. Items that don't belong in the recycling are called **CONTAMINATION**. They slow down the process and even cause damage.

Here are some common items to **KEEP OUT**:

NO plastic bags NO furniture NO clothes NO wood

NO scrap metal NO tires NO hangers

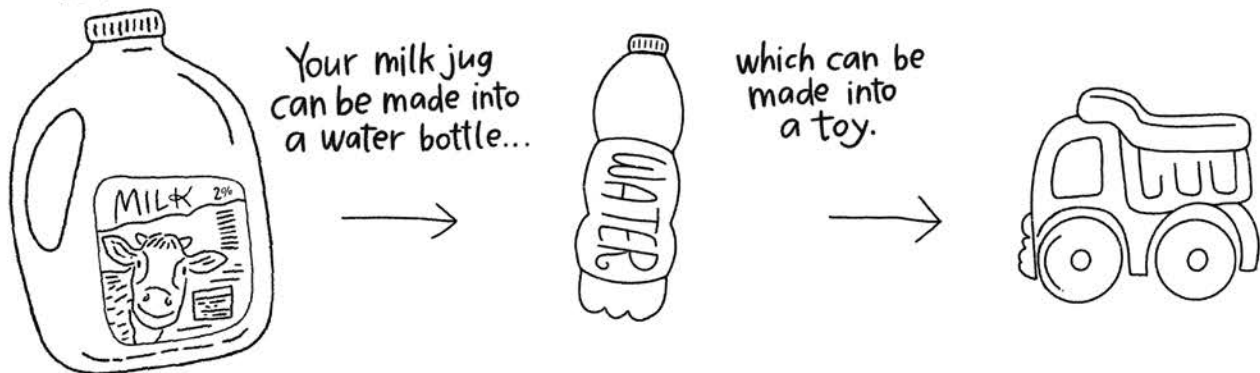


Your choice to recycle keeps materials out of the landfill and gives them a second life. Businesses use the items you recycle to make new products. This helps the planet by saving energy, reducing waste, and using fewer of the Earth's resources.

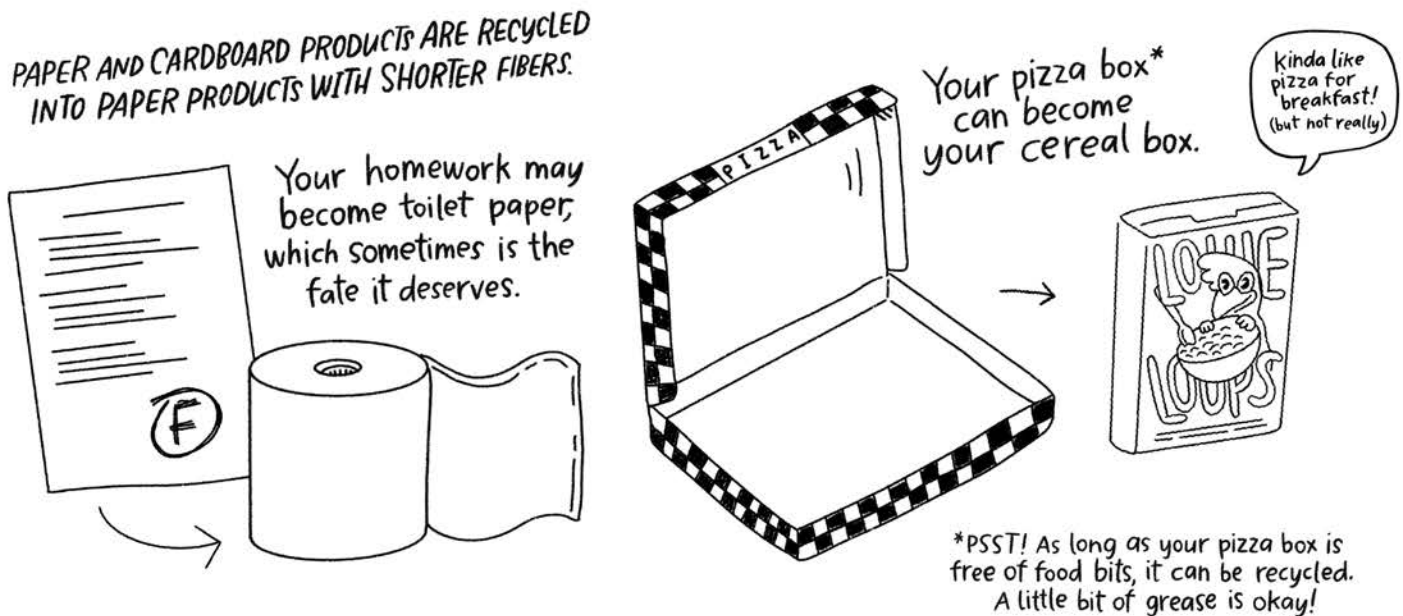
SOME THINGS CAN BE RECYCLED AGAIN AND AGAIN!



SOME THINGS, LIKE PLASTICS, CHANGE WHEN THEY ARE RECYCLED, SO THEY MUST BE MADE INTO SOMETHING DIFFERENT.

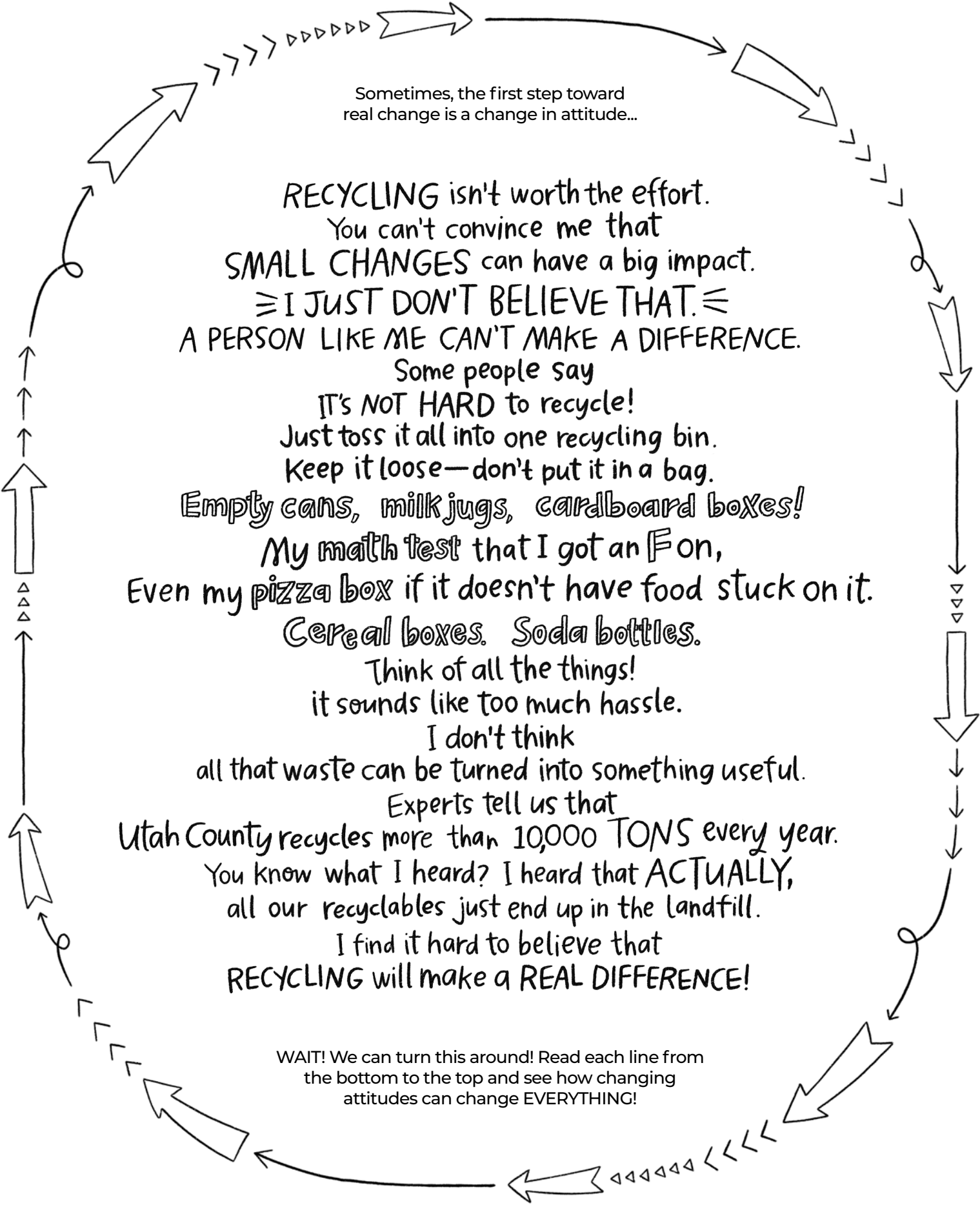


PAPER AND CARDBOARD PRODUCTS ARE RECYCLED INTO PAPER PRODUCTS WITH SHORTER FIBERS.



Can you guess what new product can be
made out of each of these recyclable materials?
Follow the lines to find out!





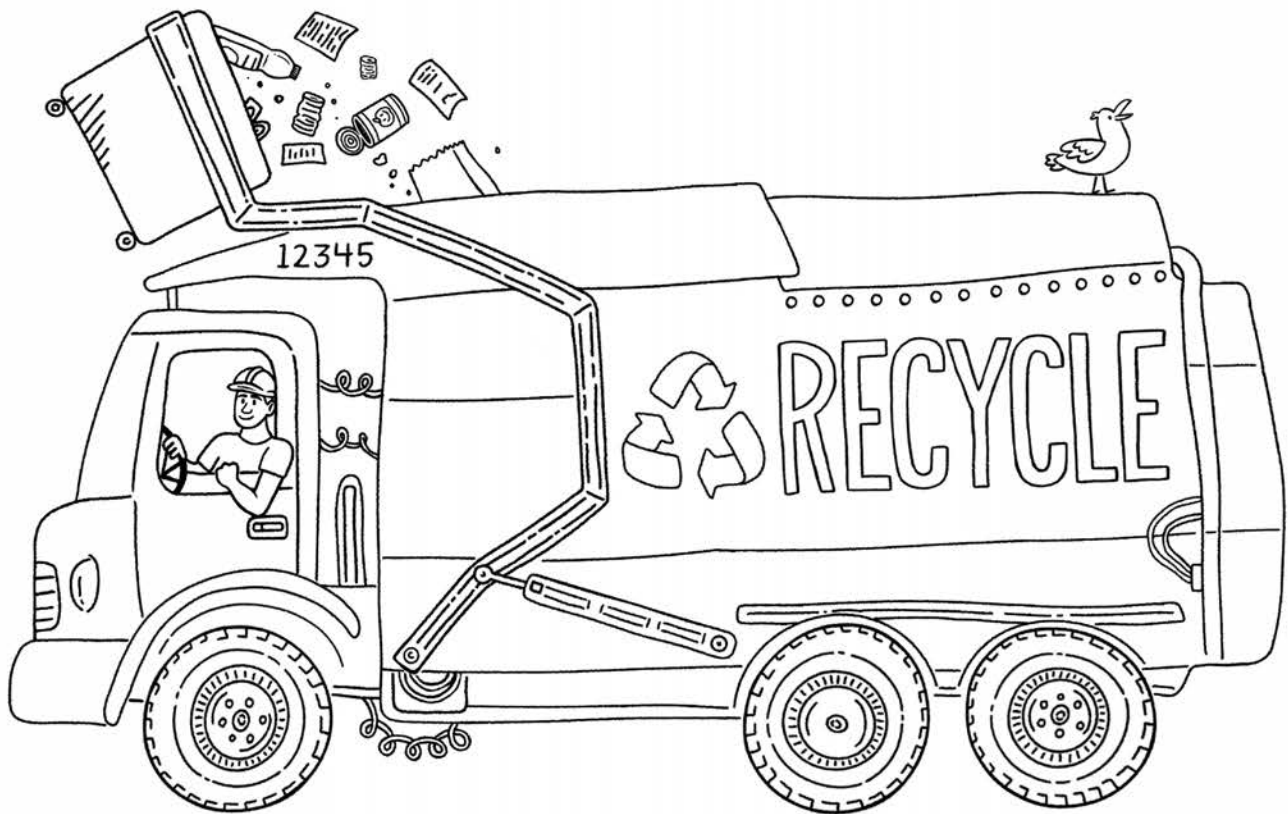
Sometimes, the first step toward
real change is a change in attitude...

RECYCLING isn't worth the effort.
You can't convince me that
SMALL CHANGES can have a big impact.
≡ I JUST DON'T BELIEVE THAT. ≡
A PERSON LIKE ME CAN'T MAKE A DIFFERENCE.

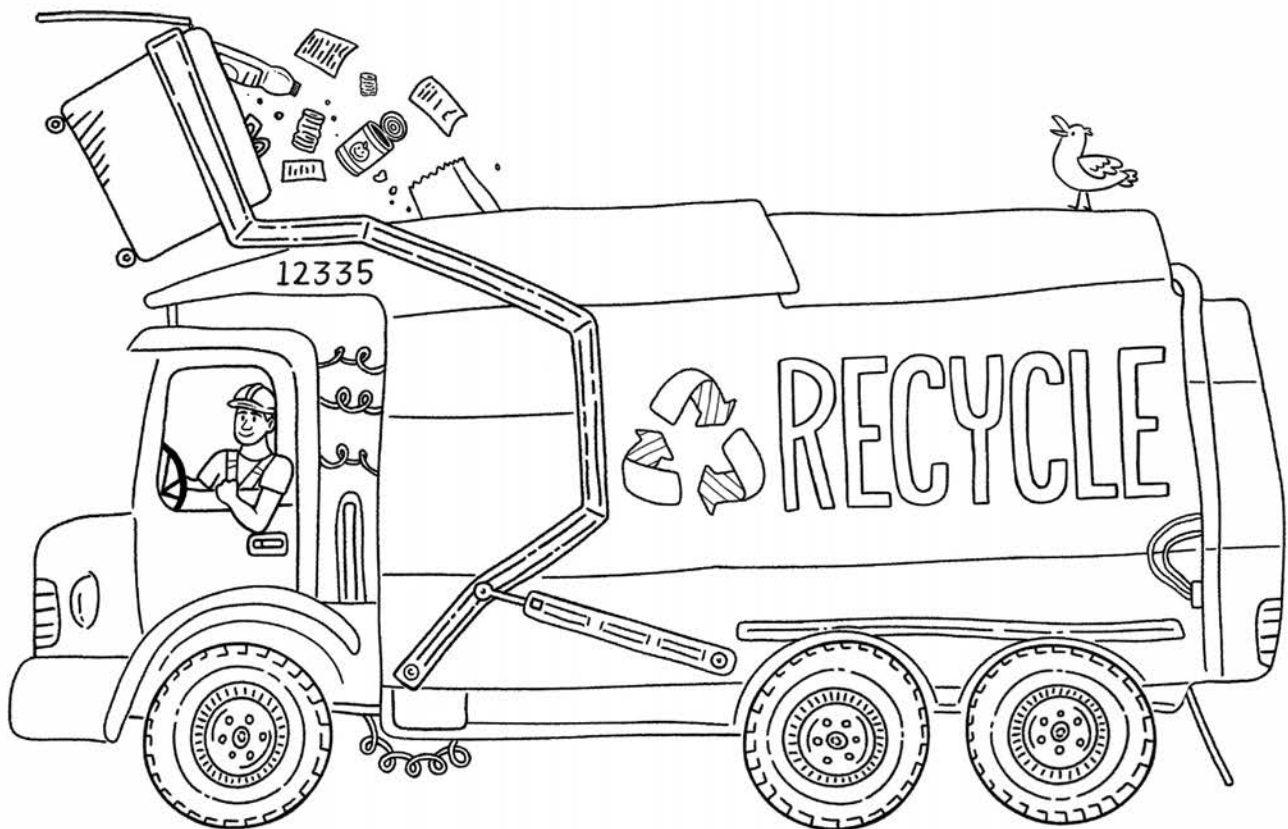
Some people say
IT'S NOT HARD to recycle!
Just toss it all into one recycling bin.
Keep it loose—don't put it in a bag.
Empty cans, milk jugs, cardboard boxes!
My math test that I got an F on,
Even my pizza box if it doesn't have food stuck on it.
Cereal boxes. Soda bottles.
Think of all the things!
it sounds like too much hassle.

I don't think
all that waste can be turned into something useful.
Experts tell us that
Utah County recycles more than 10,000 TONS every year.
You know what I heard? I heard that ACTUALLY,
all our recyclables just end up in the landfill.
I find it hard to believe that
RECYCLING will make a REAL DIFFERENCE!

WAIT! We can turn this around! Read each line from
the bottom to the top and see how changing
attitudes can change EVERYTHING!



SPOT 15 DIFFERENCES



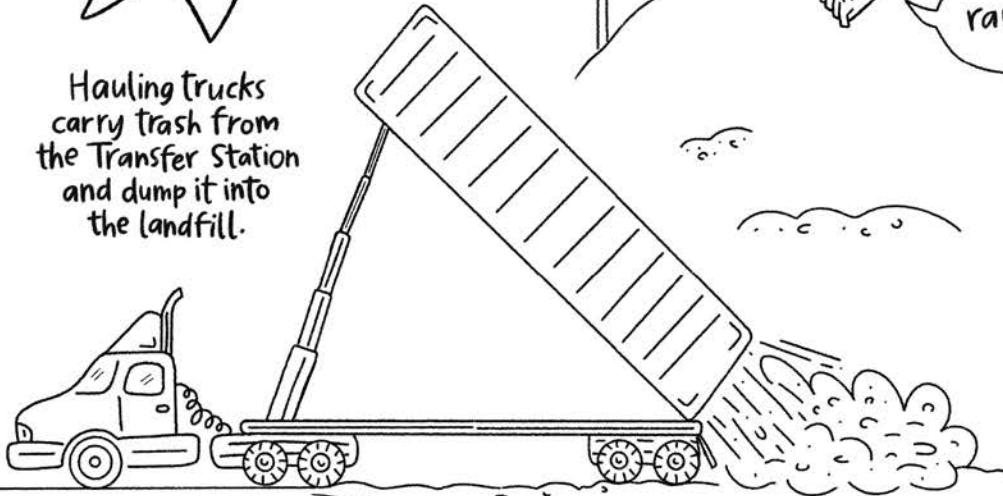
Single-stream recycling means you put all your recyclables—like paper, cardboard, plastic, and cans—into one bin. They get sorted at the recycling center (MRF) later, making it easier for you!

WHAT HAPPENS AT THE BAYVIEW LANDFILL?

Our trash that can't be recycled goes to the Bayview Landfill, west of Utah Lake. See how it's carefully managed to keep our environment safe!



Hauling trucks carry trash from the Transfer Station and dump it into the landfill.



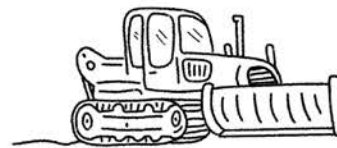
45 feet tall
tallest in the West!

We call this our "DINOSAUR FENCE" because it makes us look like Jurassic Park. It stops trash from blowing away.

rawr



Heavy machines spread the trash and squish it as flat as possible.



By the end of each day, all trash is covered with dirt.

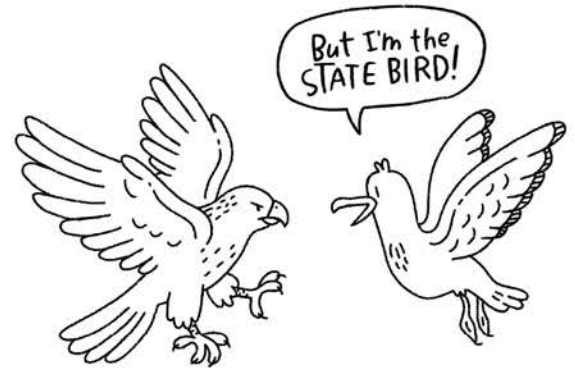


CARING FOR OUR LAND

Scientists regularly test the air, water, and soil to make sure it stays safe for plants, animals, and people.

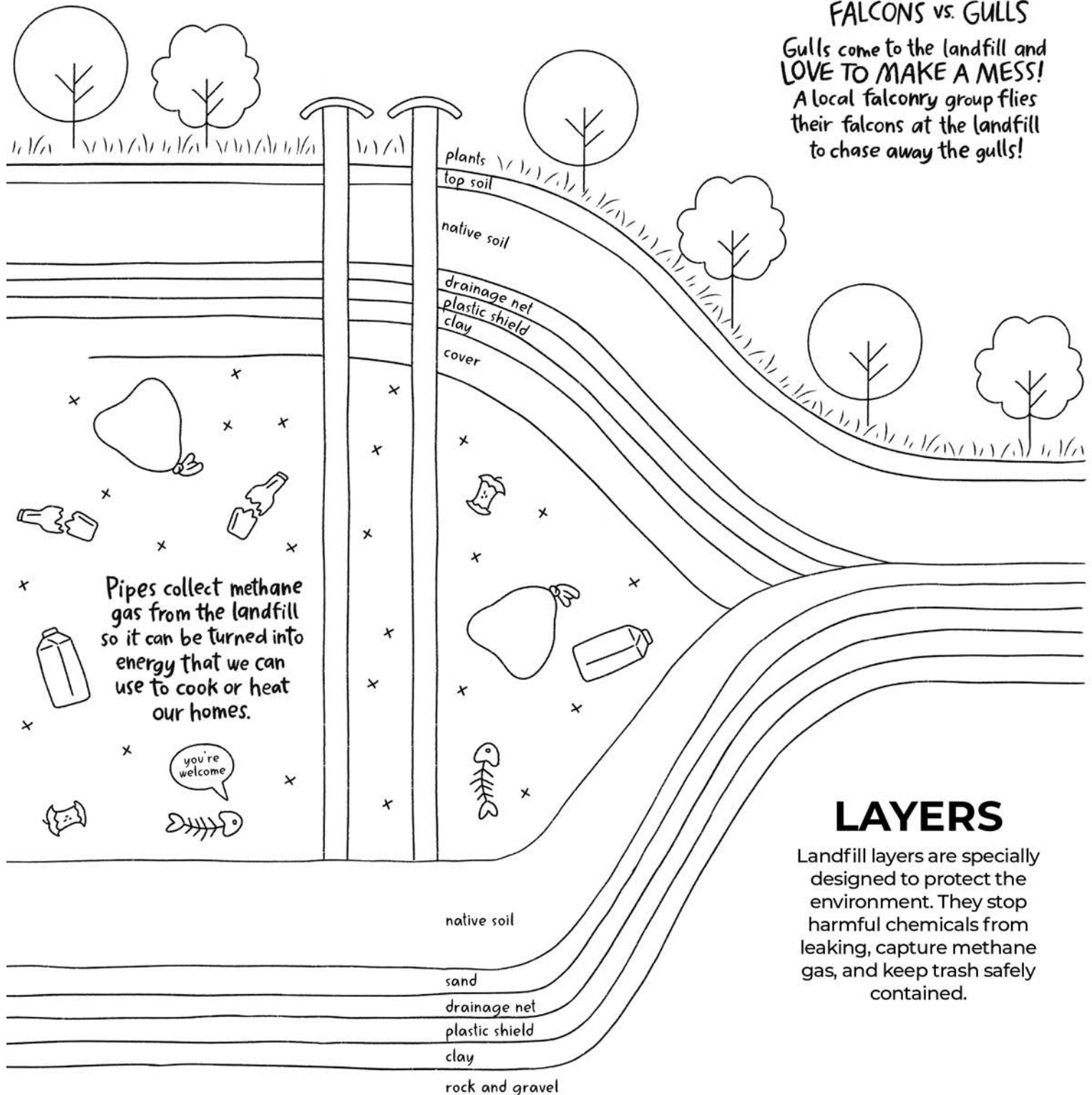
NOT A "DUMP"

A dump is an open pile of trash that harms the environment. The Bayview Landfill is different—trash is carefully buried, covered, and monitored to prevent pollution. Over time, grass and plants can grow, and the land can be put to new use, like as a park or a solar energy field.



FALCONS vs. GULLS

Gulls come to the landfill and **LOVE TO MAKE A MESS!** A local falconry group flies their falcons at the landfill to chase away the gulls!



LAYERS

Landfill layers are specially designed to protect the environment. They stop harmful chemicals from leaking, capture methane gas, and keep trash safely contained.

When trash decomposes in a landfill, it creates a **harmful GAS called methane**. The Bayview Landfill uses state-of-the-art systems to capture this gas and turn it into something helpful. Our landfill is a pioneer in methane collection, helping to protect the environment and create renewable energy.

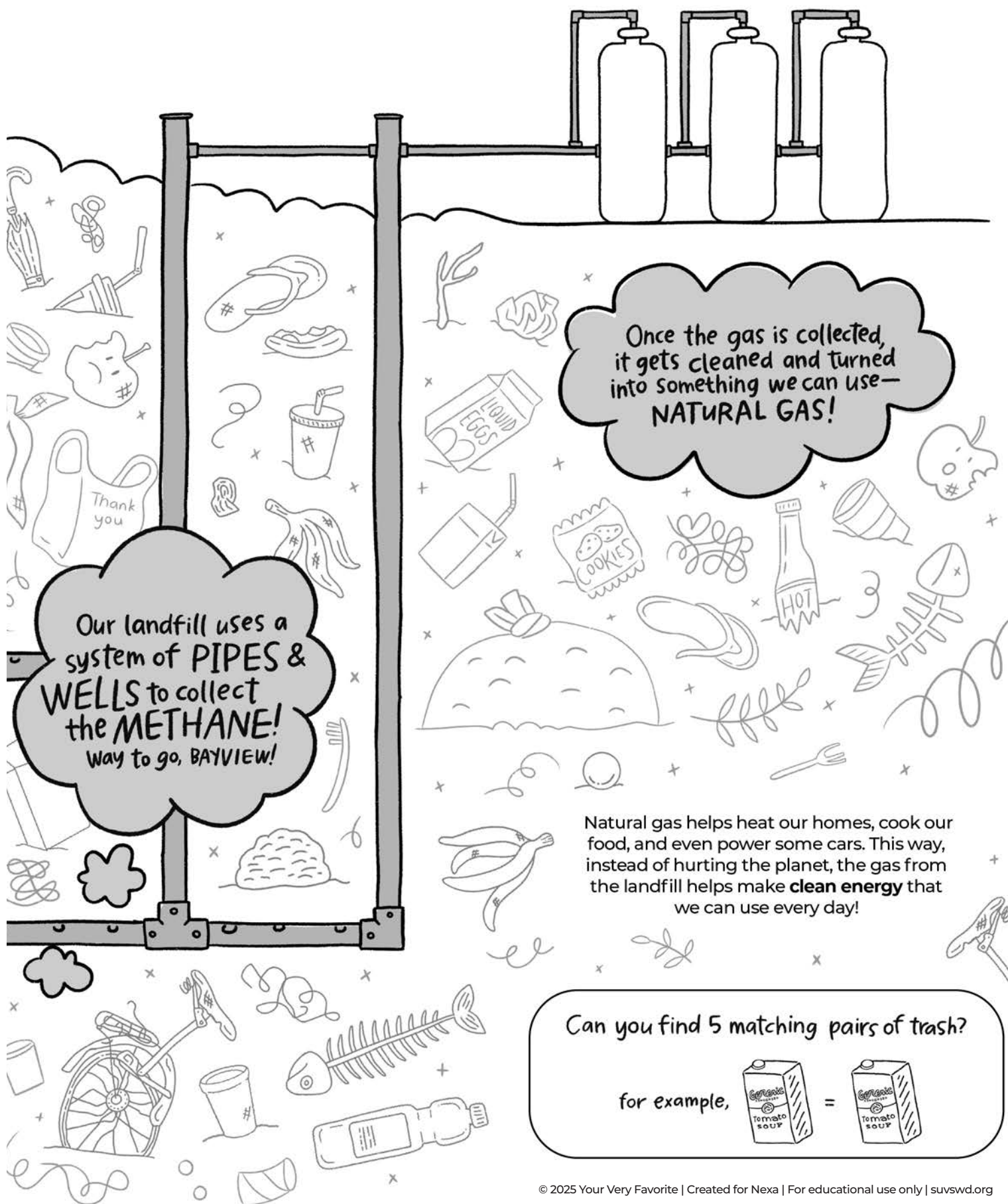
↳ Methane is the same thing as our **FARTS**.
And it stinks!

It can catch FIRE in the landfill, which is DANGEROUS!

Worst of all, methane pollutes the air, hurting our planet.

BUT WAIT!
There's GOOD NEWS!

We can turn trash, which is **HARMFUL** to the planet, into something **HELPFUL** by capturing **TRASH GAS** from the landfill!





Once the gas is collected, it gets cleaned and turned into something we can use—**NATURAL GAS!**

Our landfill uses a system of **PIPES & WELLS** to collect the **METHANE!**
Way to go, BAYVIEW!

Natural gas helps heat our homes, cook our food, and even power some cars. This way, instead of hurting the planet, the gas from the landfill helps make **clean energy** that we can use every day!

Can you find 5 matching pairs of trash?

for example,  = 

HOUSEHOLD HAZARDOUS WASTE

Household hazardous waste (HHW) is anything in or around your home that is:

POISONOUS



FLAMMABLE



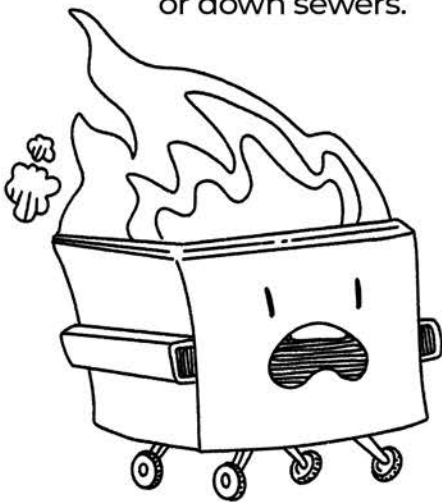
CORROSIVE



TOXIC

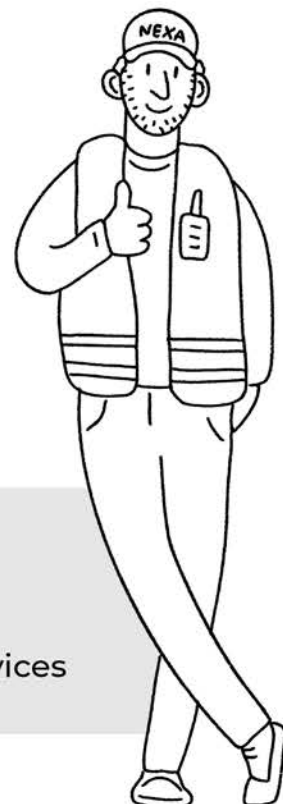


It is **DANGEROUS** to dispose of these items in your garbage can or down sewers.



It is **ILLEGAL** to abandon them or pour them in gutters, storm drains, or waterways.

At the Transfer Station, our **HHW SPECIALIST** knows how to handle these items safely so they don't hurt people, animals, or the earth.



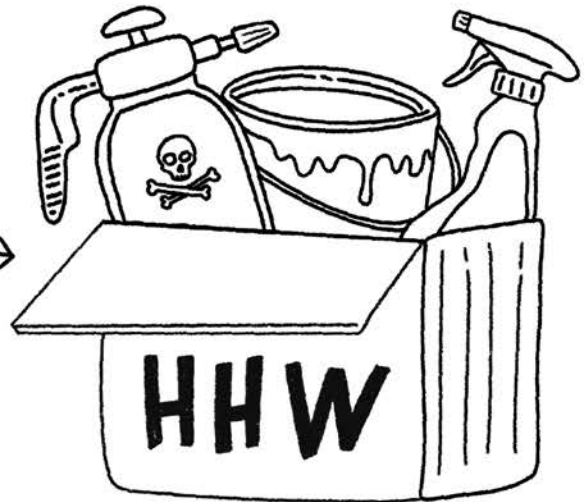
EXAMPLES:

batteries
electronics
cooking oil

fuels
aerosols
pesticides
paint

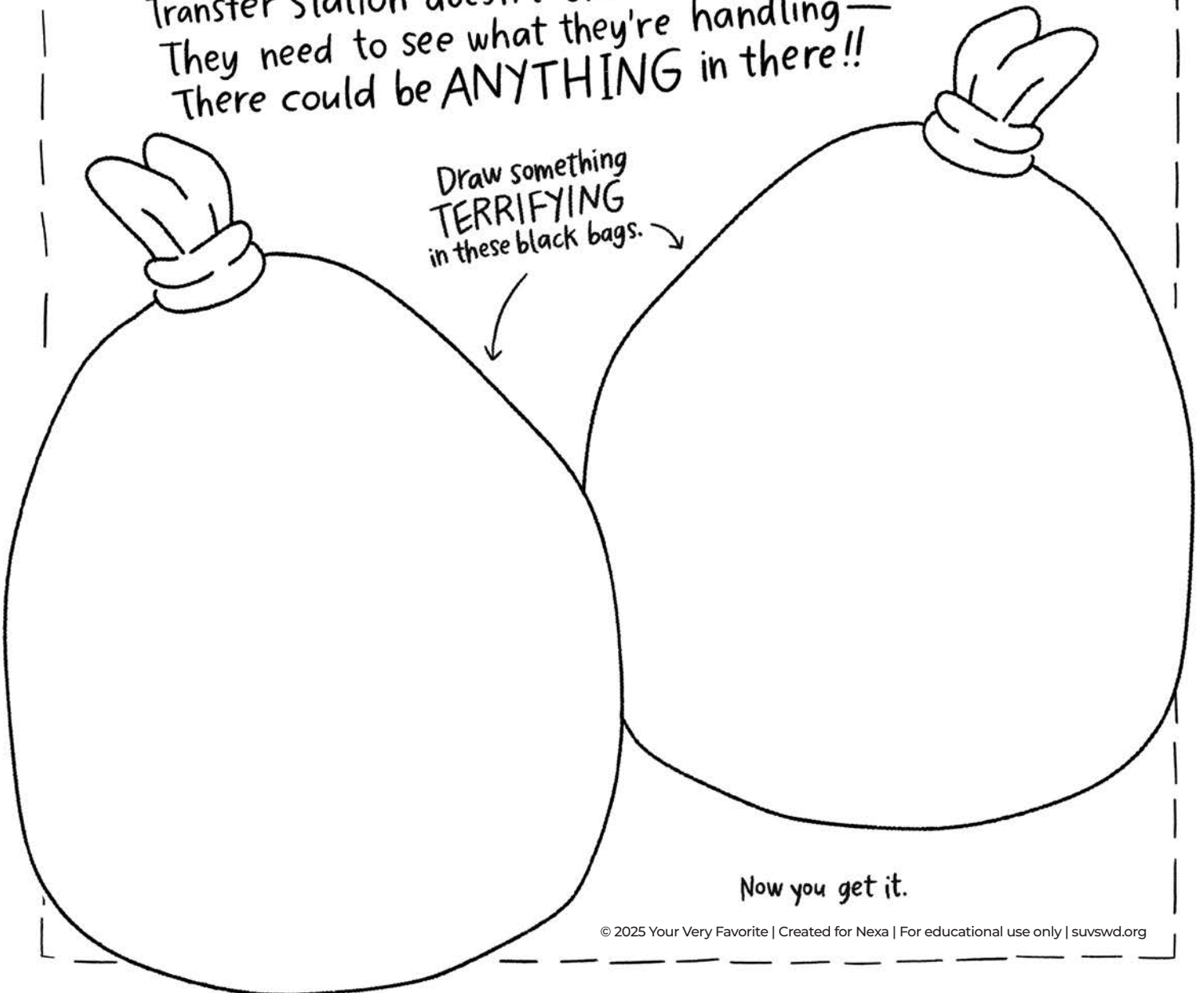
cleaning supplies
automotive fluids
fluorescent light bulbs
mercury-containing devices

Your family can drop HHW off at the Transfer Station. **PLEASE don't put hazardous items in a bag. Put them in an open box like this** so the specialist can see each item and handle it safely.

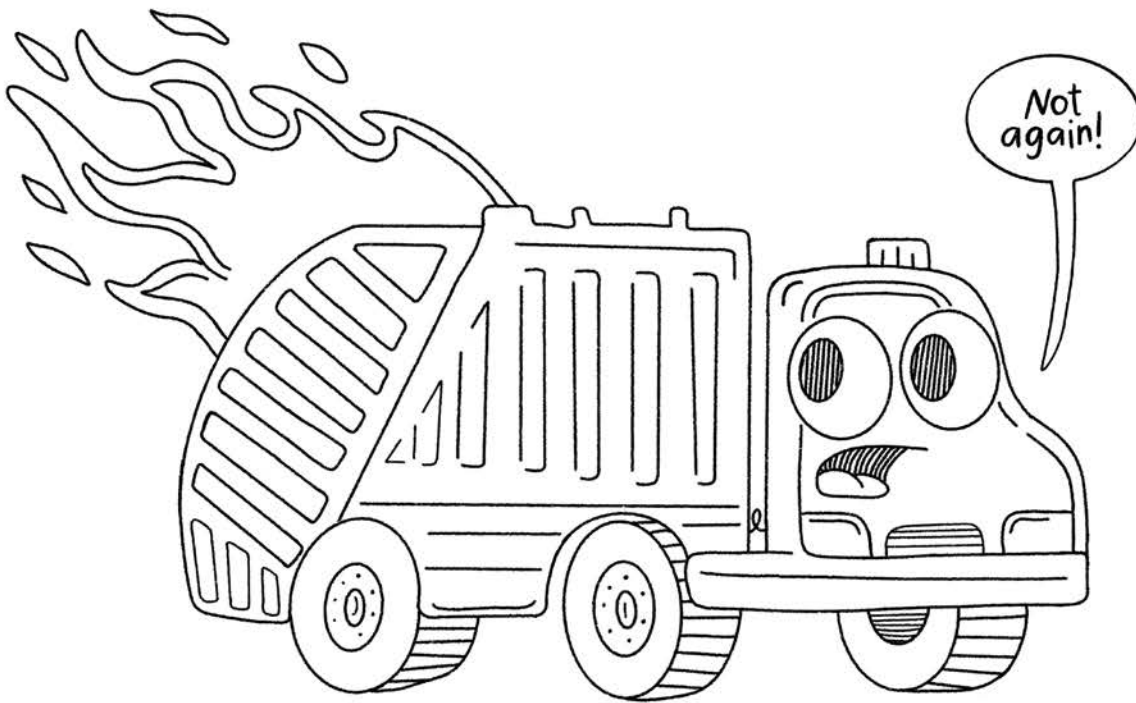


WHY, you ask?
Well, would **YOU** want to open a black plastic mystery bag of **TOXIC, FLAMMABLE, CORROSIVE, POISONOUS** waste?? The specialist at the Transfer Station doesn't either!
They need to see what they're handling—
There could be **ANYTHING** in there!!

Draw something **TERRIFYING** in these black bags.



Now you get it.



WE NEED YOUR HELP!

RECHARGEABLE BATTERIES can't go out with your regular trash.

When they are crushed in the garbage truck or at the Transfer Station, they can overheat and start a fire! This actually happens **ALL THE TIME** because people don't know any better. But now **YOU KNOW**, so you're never going to do it, right? **RIGHT?**



How do your old electronics feel when you toss 'em out with the trash?

x ~ " > * v " > 7 < o * d u * ? 6 •

Look at the examples of items that have rechargeable batteries. Each symbol has a matching letter—find the symbols in the riddle and write the correct letters in the blanks to reveal the answer!

EXAMPLE: 6 = P

WORD SEARCH

C U C S M J U I C E B O X Z T
 L A T L T O P A I N T C A N O
 C I C O O R T L L O N B E F Y
 F E T A O T A O T H A I L B S
 E U R H R T H W R J P K E R H
 P J R E I D H E S O K E C O O
 E S U N A V B B S O I K T K E
 S S O N I L M O R E N L R E S
 T O B D K T B B A U S S O N M
 I U O H A M U O A R S A N S I
 C P O V E C A R X T D H I T L
 I C K A L R A I E E T A C U K
 D A S D Y B E N L E N E S F J
 E N A P P L E C O R E U R F U
 S P R A Y P A I N T S E D Y G

RECYCLE

cardboard
 cereal box
 milk jug
 soup can
 junk mail
 soda can

LANDFILL

juice box
 apple core
 broken stuff
 napkins
 straws
 toothbrush

HAZARDOUS

paint can
 motor oil
 lithium battery
 spray paint
 pesticides
 electronics

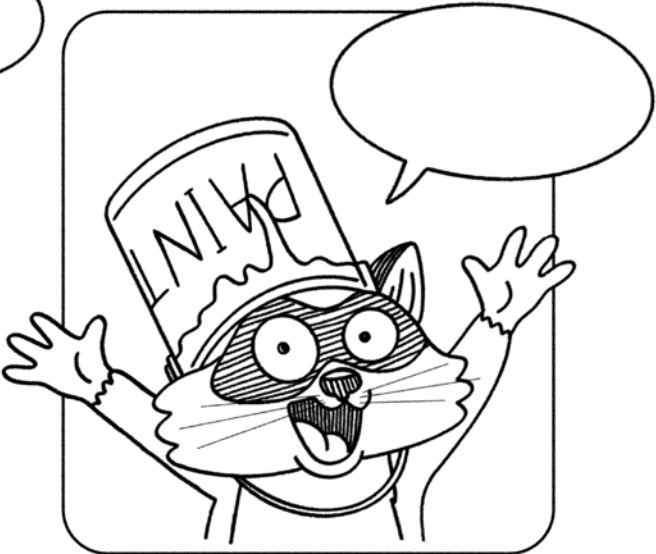
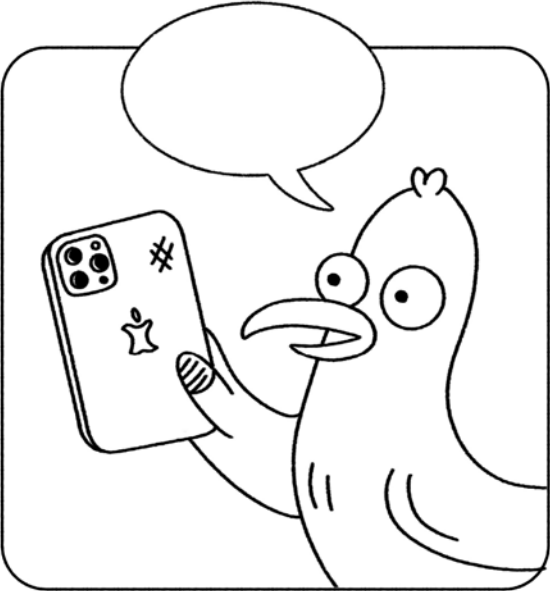
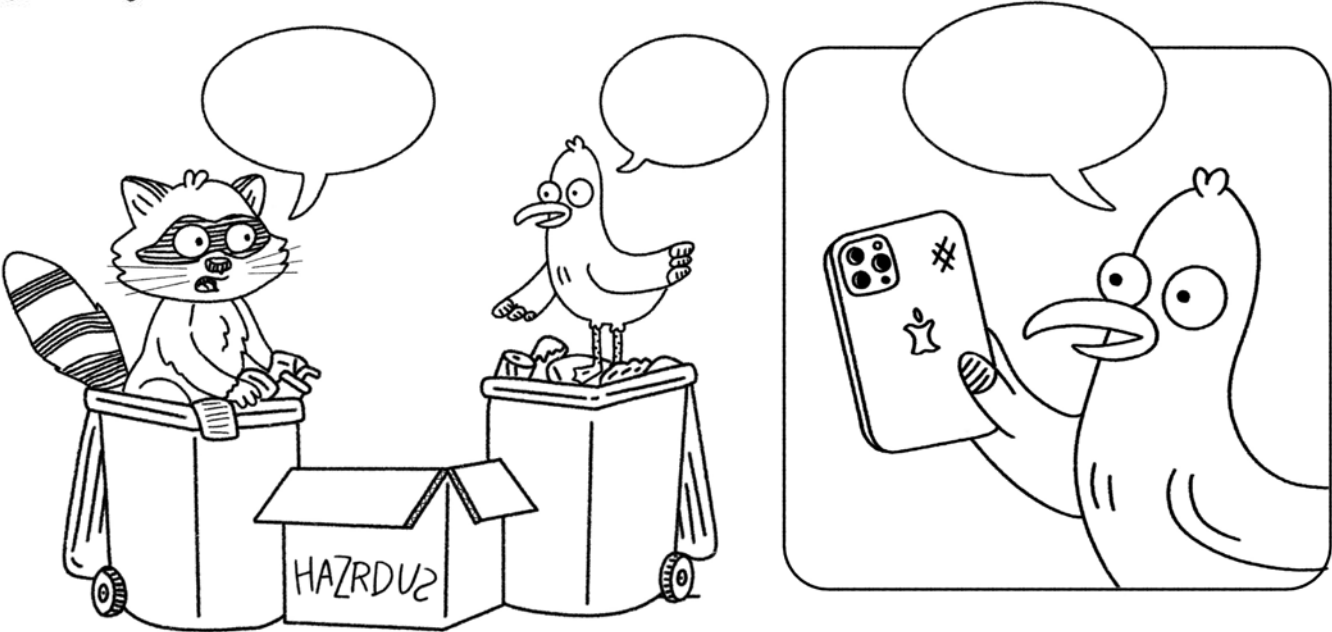
DONATE or SELL

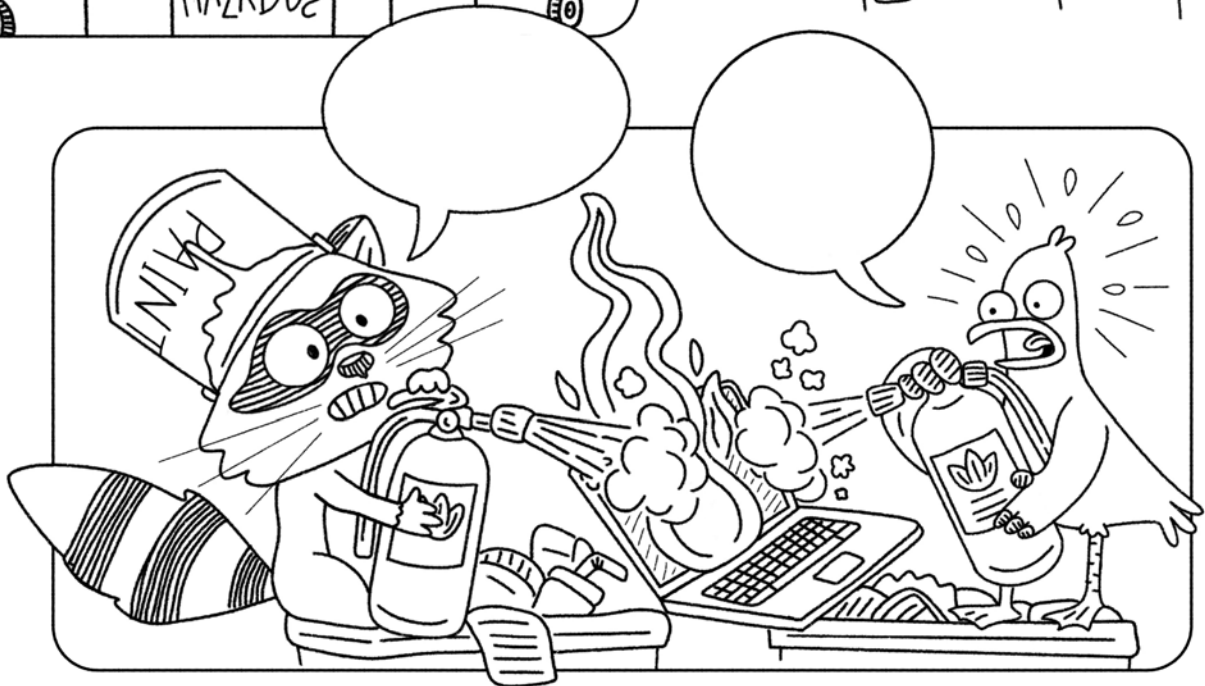
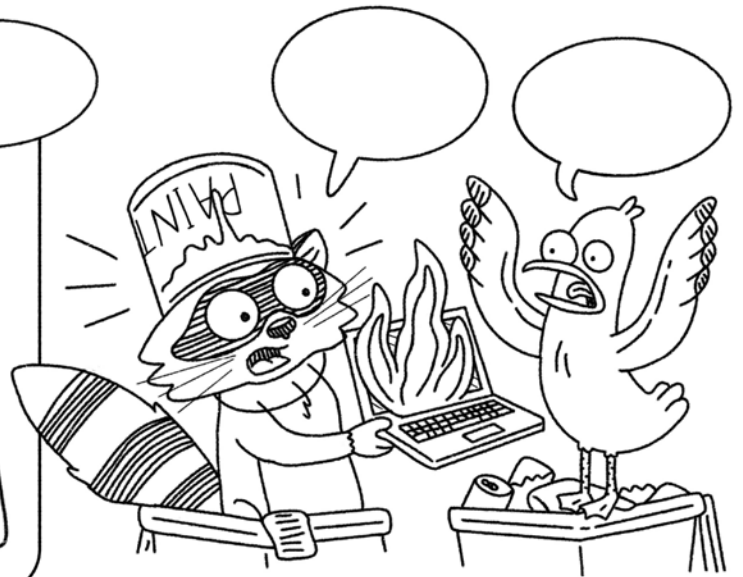
furniture
 clothes
 books
 bike
 shoes
 toys

Why is it hard to make jokes about recycling?

Use the leftover
 letters from the
 word search (in order)
 to fill in the blanks!

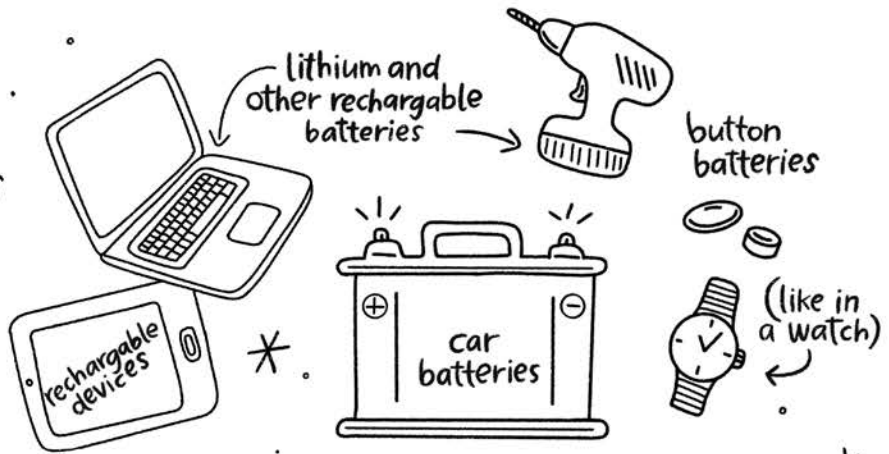
what's going on here? YOU decide by filling in the bubbles!



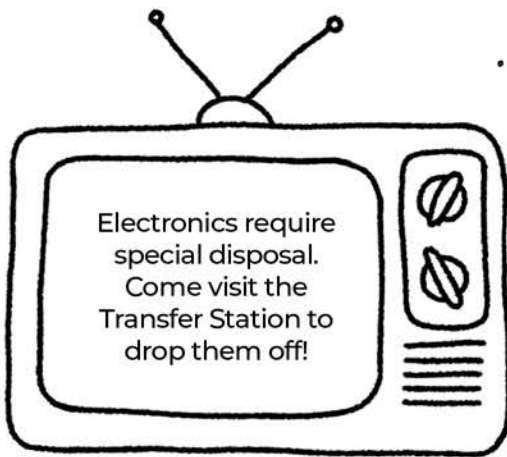


How much does it cost
to drop off used batteries
at the Transfer Station?

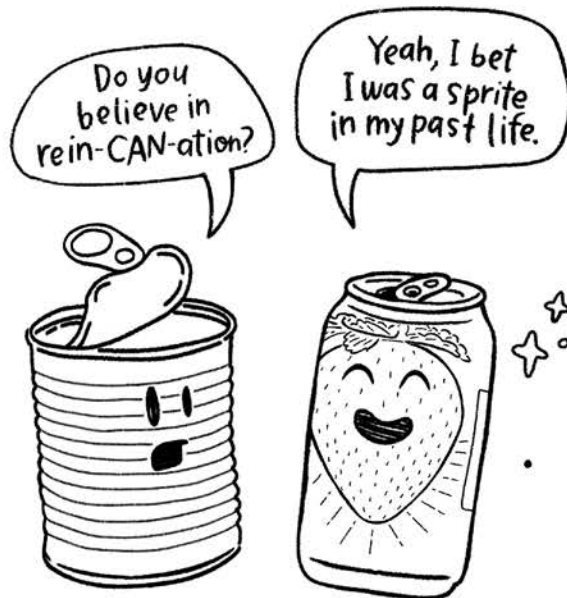
NOTHING! We take them
FREE OF CHARGE
get it??



Dropping off used batteries at the Transfer Station helps keep everyone safe! We'll make sure they are safely recycled to make new products and to protect the environment.



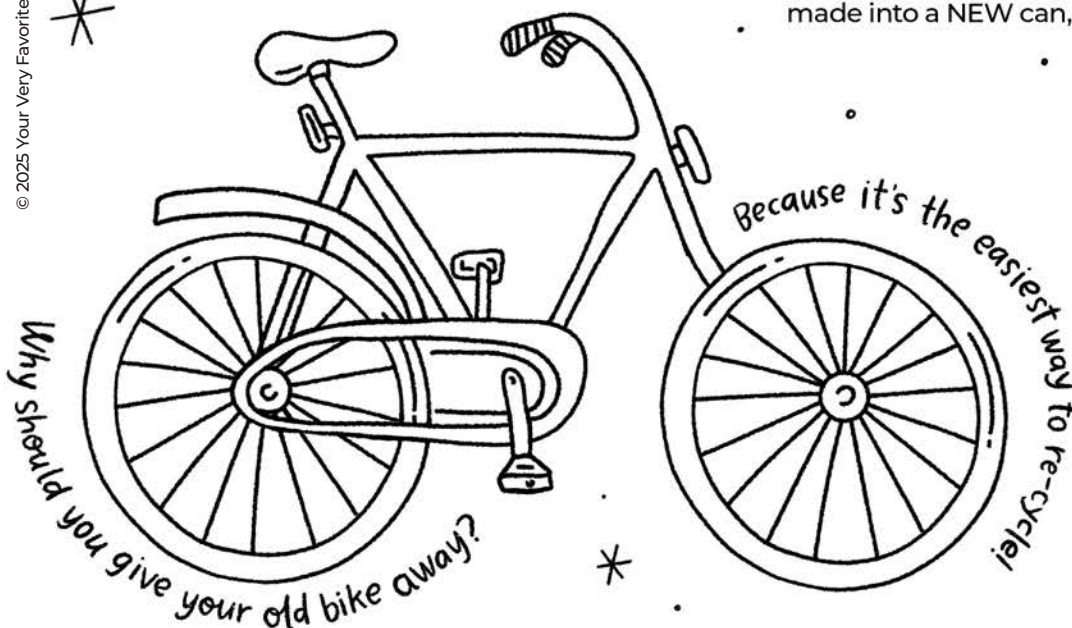
Electronics require
special disposal.
Come visit the
Transfer Station to
drop them off!



Do you
believe in
rein-CAN-ation?

Yeah, I bet
I was a sprite
in my past life.

In as little as 60 days, a can from your
recycling bin can be melted, purified, and
made into a NEW can, ready for purchase.



Why should you give your old bike away?

Because it's the easiest way to re-cycle!

When you've
outgrown your
bike, pass it down
to a younger sibling
or friend, or sell it!
Choose to reuse, and keep
that bike rolling!

How do pirates take care of the environment?

They follow the three ARRRRRRs!

I heard you're headed to the playground.

Yep! It's where I've always planned to re-tire.

Reduce, Reuse, Recycle, MATEY!

Old tires can be turned into rubber padding used on the ground at parks! You can drop off up to four used tires at a time at the Transfer Station.

WITHOUT PEEKING AT THE NEXT PAGE, FILL IN THESE BLANKS WITH WORDS THAT FIT EACH CATEGORY. THEN COPY YOUR ANSWERS INTO THE BLANKS ON THE NEXT PAGE!

1. ADJECTIVE
2. PLURAL NOUN
3. PLURAL NOUN
4. ADJECTIVE
5. VERB
6. VERB
7. NUMBER
8. NUMBER
9. VERB
10. SILLY NAME
11. ADJECTIVE
12. PLURAL NOUN
13. PLURAL NOUN
14. ADJECTIVE
15. ADJECTIVE
16. VERB
17. ADJECTIVE
18. ADJECTIVE
19. PLURAL NOUN
20. PLURAL NOUN

How've you bin?

Feeling a little unhinged, to be honest!

*

from TRASH to TREASURE: a RECYCLING JOURNEY

Recycling is a very _____ process! Here's how it happens:
1. ADJECTIVE

FIRST, put your recyclables, like _____ and _____, in your
2. PLURAL NOUN 3. PLURAL NOUN

_____ recycling bin. The recycling truck will come by to _____
4. ADJECTIVE 5. VERB
your bin!

NEXT, the truck will bring all the recyclables from your neighborhood to the Transfer Station and _____ them on the tipping floor into a pile that can grow up to
6. VERB
_____ feet high and _____ feet wide. A loader will push the pile into
7. NUMBER 8. NUMBER
the compactor, which will _____ everything into an 8-foot by 8-foot cube.
9. VERB

NEXT, a transfer truck takes the recyclables to the Material Recovery Facility, also known as the _____, which is full of _____ machines that help
10. SILLY NAME 11. ADJECTIVE
sort the recyclables! Magnets are used to sort out items like _____
12. PLURAL NOUN
and _____ . _____ screens and _____ tunnels
13. PLURAL NOUN 14. ADJECTIVE 15. ADJECTIVE
will _____ all of the _____ items.
16. VERB 17. ADJECTIVE

Once all the recyclables are sorted, they can be purchased by companies and made into _____ products like _____ and _____ .
18. ADJECTIVE 19. PLURAL NOUN 20. PLURAL NOUN

Isn't that TRULY AMAZING?!

WASTE MANAGEMENT CAREERS

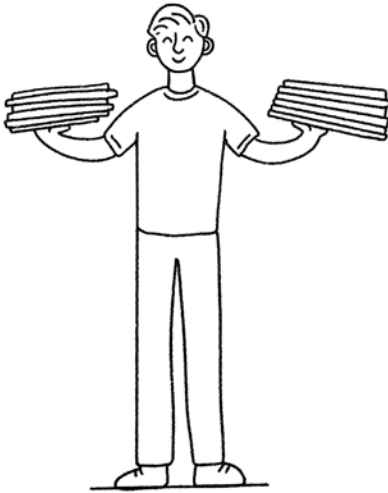
Waste management careers are all about finding smart ways to handle trash, protect nature, and even turn waste into new resources. Let's meet some of the people making a difference every day!



FACILITY OPERATOR
Runs machines that handle trash



COLLECTOR
Picks up trash and recyclables



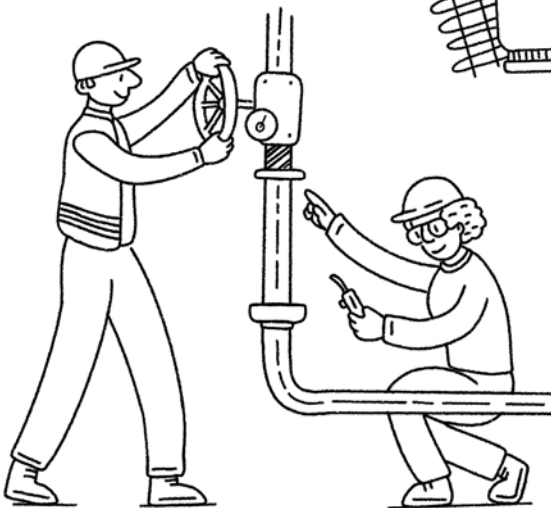
RECYCLING AND SUSTAINABILITY LEADER
Helps people recycle and reduce waste



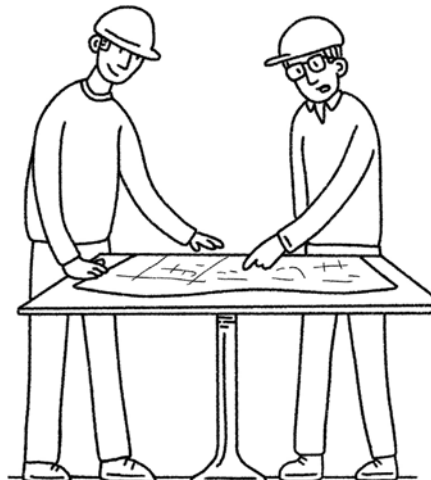
HAZARDOUS WASTE SPECIALIST
Handles dangerous waste safely



ENVIRONMENTAL SCIENTIST
Checks if trash harms air, water, or soil



ENERGY AND RESOURCE EXPERT
Turns trash into energy



ENGINEER
Designs better, safer, cleaner ways to handle trash



RESEARCHER
Finds new ways to reuse trash

REDUCE, REUSE, RECYCLE

Creating less waste is a simple way we can all pitch in to make our community a better place. When we **reduce, reuse, and recycle**, we help keep Utah a place we can be proud of, now and in the future.

REDUCE means using fewer things so we don't create as much waste.

REUSE means finding ways to use something again.

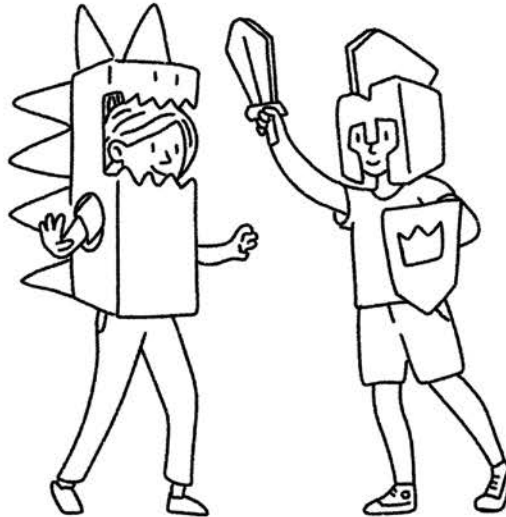
RECYCLE means turning old materials into something new instead of trash.

Let's use cardboard boxes as an example...



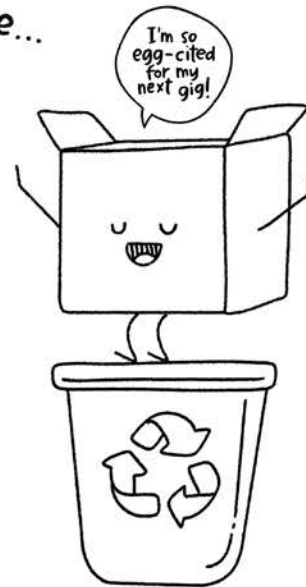
REDUCE

Buy from a local business instead of ordering online. That's one less box used for shipping!



REUSE

Make Halloween costumes from cardboard boxes.



RECYCLE

Put cardboard in the recycling bin. It might become an egg carton!

Now let's try it with a plastic grocery bag...



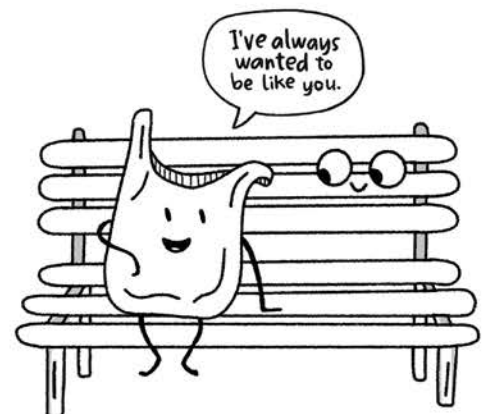
REDUCE

Bring your own reusable bags to the store.



REUSE

Use grocery bags to pick up pet poop.



RECYCLE

Curbside recycling can't accept grocery bags, but many grocery stores do! Bring in used bags to be recycled into park benches!

Every day, we make choices about what to **TOSS**, **RECYCLE**, or **REUSE**. **SMART** choices help keep Utah **CLEAN** and **PROTECT** the environment!

Find your way through the maze by making **GOOD WASTE DECISIONS**. Follow the **DOs** to keep moving forward—but watch out! The **DON'Ts** lead to dead ends.

START



sweet!

DO reuse empty jars to store odds and ends (and goodies!).



I will single-handedly save this planet.

DO bring a reusable water bottle with you.



I'm crushed.

DON'T put cans in the trash. They are easily recycled!



can't wait to meet new butts!

DO sell or give away your old furniture.

I'm your worst nightmare



DON'T put HHW in a black trash bag.

you stink!



you too.

DO give mismatched socks a second life as sock puppets!

I don't belong here.



DON'T put styrofoam containers in the recycling bin.

I'm ready to cause trouble!



DON'T bag your recyclables. Leave them loose!



DON'T put plastic utensils in the recycling bin.

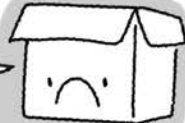
Don't you fork-get it!



ooo TUNA Tuesday!

DO use a lunchbox instead of plastic bags.

I am REALLY down in the dumps.



DON'T send cardboard to the landfill! It deserves a second chance!



Am I a T-SHIRT or am I a rag? I'm torn.

DO turn ruined clothing into cleaning rags.

Is it hot in here... or is it just me?



DON'T throw your old electronics out with the trash!

I dig it.



DO donate toys you no longer use.

Thanks for doing your part!

Lots of people making simple, easy choices quickly adds up to make a **HUGE** difference!

SMALL ACTIONS, BIG DIFFERENCE

Every small action helps make a BIG difference for our community and future generations! **Circle two things you'd like to do.**



Set up a recycling bin at home to make sorting easy.



Carry a reusable water bottle instead of buying disposable.



Remind my family to bring trash with rechargeable batteries to the Transfer Station.



Talk to my family about household hazardous waste.



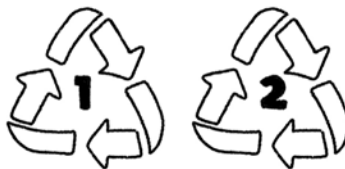
Display a poster showing what to put in the recycling bin.



Bring my own shopping bag.



Swap a product for something more renewable.



Check the recycling number on plastic items that my family uses.



Find a new use for an old jar.



Choose a reusable lunch bag.



Donate or sell toys and clothing I've outgrown.



Bring my family to the Transfer Station education room.

ANSWERS

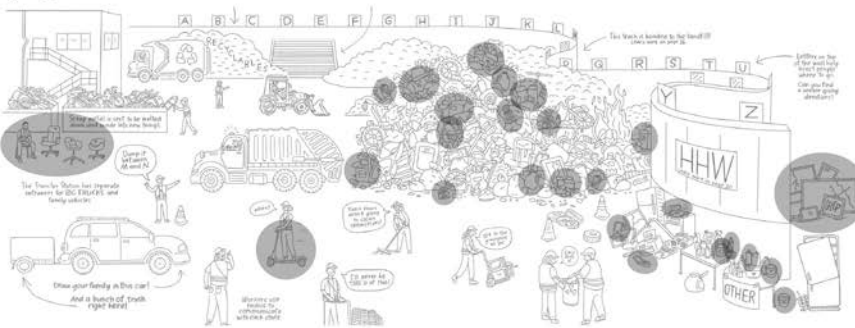
page 5

TRASH: plastic bag, wax carton, straw, food pouch, glass, styrofoam

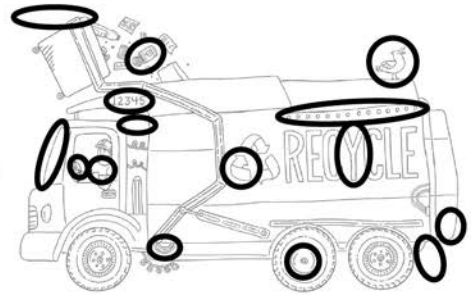
RECYCLING: paper, cardboard, food box, steel can, aluminum, plastic container

WHAT HAS TWO WHEELS AND FLIES? your trash bin

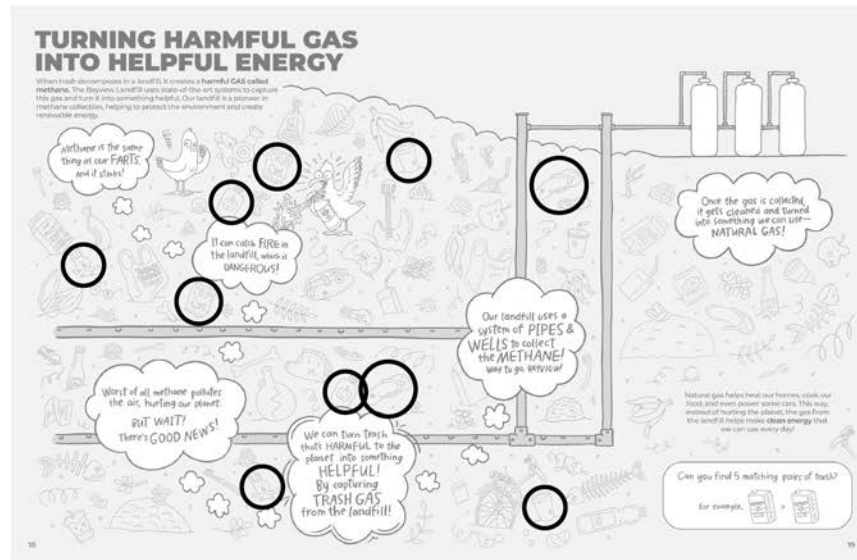
pages 6-7



page 15



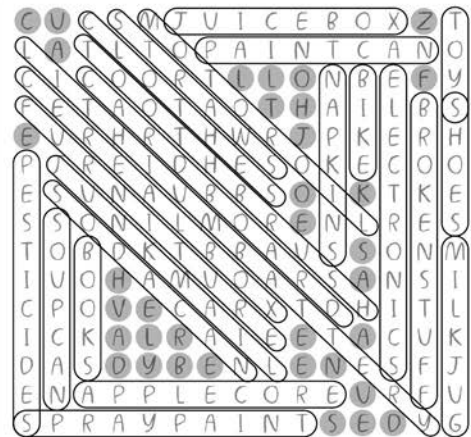
pages 18-19



page 22

They get all fired up.

page 23



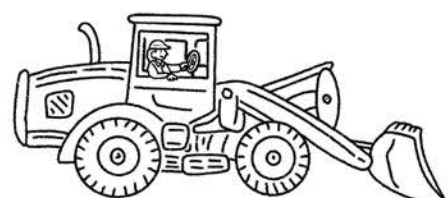
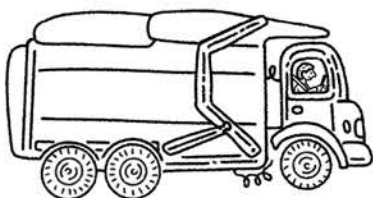
CUZ ALL OF THE JOKES HAVE ALREADY BEEN USED.

YOU'RE INVITED

BRING THE FAMILY TO OUR STATE-OF-THE-ART DRY CREEK TRANSFER STATION!

518 West 3450 North
Spanish Fork, Exit 260

Open from 7 am to 6 pm
Monday to Saturday



Watch trucks come and go and check out our hands-on exhibits in the education room.

HEY THERE, GROWN-UPS!

This book is packed with info that EVERYONE should know. Take a moment to flip through it with your kids—they'll love sharing what they've learned with you!

SINCE WE KNOW YOU'RE BUSY, HERE ARE SOME QUICK ANSWERS TO QUESTIONS WE HEAR MOST OFTEN IN OUR COMMUNITY:

RECYCLING

What goes in the recycling bin?

Cardboard, paper, food boxes, aluminum cans, steel (tin) cans, and plastic containers labeled ♻️ and ♻️. Make sure they are clean and dry.

What items do NOT go in the recycling bin?

Avoid recycling anything not on the list. Some common items you shouldn't recycle include plastic bags, foam containers, food waste, and wax-coated cartons (like juice or milk cartons).

Do I need to rinse containers before recycling?

Yes, rinse food and drink containers to keep recycling clean. Leftover food and liquid make the materials harder to process and may contaminate the entire load, causing the whole batch to be sent to the landfill.

Why can't I bag my recyclables?

Plastic bags and bagged recyclables jam sorting machines. Always place recyclables loose in the bin so they can be sorted properly.

Where can I recycle glass?

Utah County does not offer curbside glass recycling, but you can bring your glass to the Transfer Station for recycling.

Why should I recycle?

Does it really make a difference?

Recycling saves resources, reduces landfill waste, and protects the environment. Each year, more Utahns are choosing to recycle, keeping valuable materials out of landfills and contributing to a cleaner future. Thank you for recycling! Every person makes a difference!

LANDFILL

What happens to our trash at the landfill?

Our state-of-the-art landfill is designed to last over 100 years, even with our growing population! Trash is carefully buried in layers that include protective barriers to prevent soil and water contamination. This ensures long-term environmental stewardship for future generations.

How does our trash turn into energy?

As trash decomposes, methane gas is produced. Instead of releasing this harmful gas into the air, the landfill collects it and converts it into clean natural gas. This process reduces emissions and turns waste into a valuable renewable energy resource.

HAZARDOUS WASTE

What should I do with items containing hazardous materials?

Items like motor oil, paint, and cleaners shouldn't go in the trash or recycling. You can drop them off at the Transfer Station.

What do I do with batteries and old electronics?

Rechargeable batteries (like lithium batteries) and old electronics should never go in the trash or recycling bin. They often cause dangerous fires and they contain harmful substances that could pollute the environment. Instead, bring them to the Transfer Station for disposal. We'll handle them safely, recover valuable materials, and ensure they're reused or recycled responsibly to reduce waste and conserve resources.

Come visit the Dry Creek Transfer Station to explore the Education Room, learn more about waste management, or drop off your trash!